

NOD Collection

Designer Omar De Biaggio

JOBS



DESCRIPTION

The NOD Collection is manufactured in high resistance round steel tube Ø 16mm with acrylic powder coating, standard mat black, (RAL colors on request) with seat and back in plywood walnut veneer, or upholstered. The rear of the back can be fully upholstered or in walnut veneer.

VERSIONS

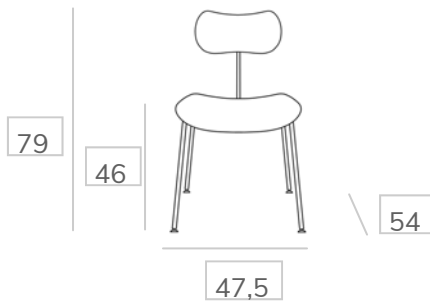
NOD CHAIR
NOD CHAIR WITH ARMREST
NOD BARSTOOL
NOD LOUNGE CHAIR WITH ARMREST

CERTIFICATIONS

Foam meets Technical Bulletin California 117 test. Other foams on request.

DIMENSIONS in cm

CHAIR



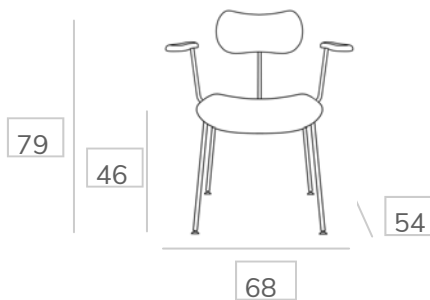
PACKAGING

Weight 14 kg
Pcs/carton 2
Volume 0,34 cbm

UPHOLSTERY

Fully upholstered 0,60 cm x 140 cm

CHAIR with armrest



PACKAGING

Weight 16 kg
Pcs/carton 2
Volume 0,34 cbm

UPHOLSTERY

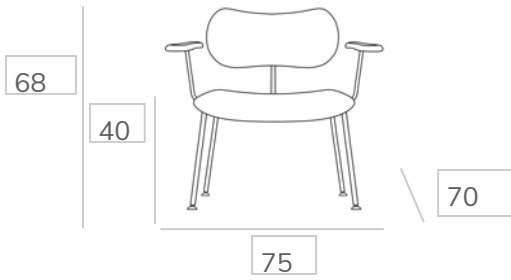
Fully upholstered 0,60 cm x 140 cm

JOBS

JOBS Srl via Maroncelli 25/b 33044 Manzano (UD) Italy Tel/Fax: +39 0432 743192 info@jobschairs.com jobschairs.com

DIMENSIONS in cm

NOD
LOUNGE



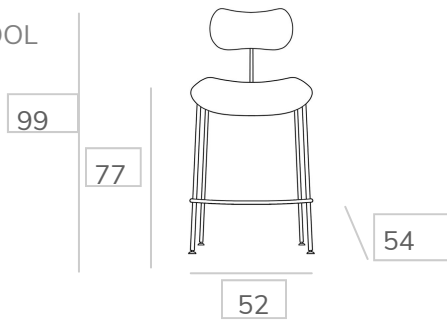
PACKAGING

Weight 9 kg
Pcs/carton 1

UPHOLSTERY

Fully upholstered 0,90cm x 140 cm

NOD
BARSTOOL



PACKAGING

Weight 9 Kg
Pcs/carton 1

UPHOLSTERY

Fully upholstered 0,60cm x 140 cm

MIX AND MATCH - our COLORS

METAL FRAME



Black, mat



RAL on request

REAR of
BACKREST



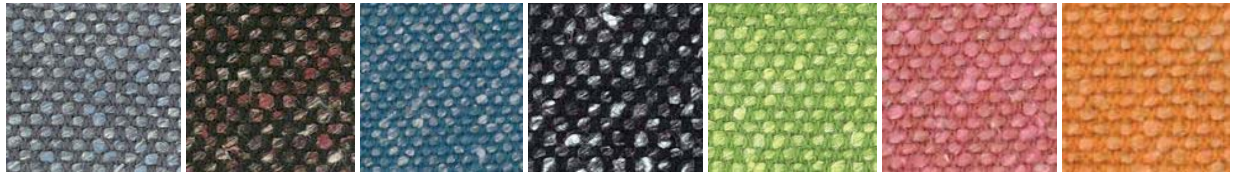
american
WALNUT

MORE
WOODEN
FINISHES
On REQUEST

WOOLS



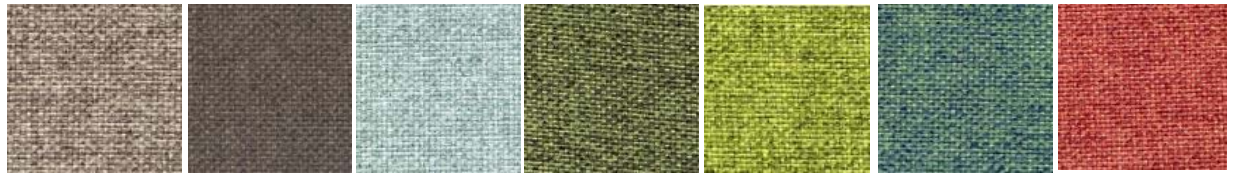
600 200 700 701 810 801 304



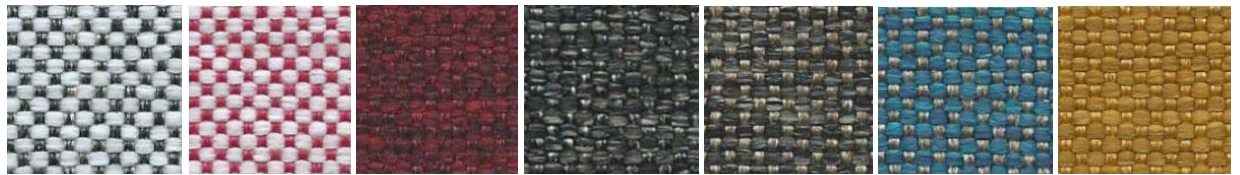
16 11 14 20 06 03 01

MORE WOOL COLORS on REQUEST

FABRICS



4560 4615 4467 4462 4464 4461 4211



C601 C301 C306 C201 C407 C706 C500

MORE FABRIC COLORS on REQUEST

VELVETS



V302 V900 V301 V500 V704 V702 V606



V801 V804 V807 V700

MORE VELVET COLORS on REQUEST

LEATHERS



1147 cenere 1165 1042 1050 1000 1065



1087 1080 1082 1040 1050 1010

MORE LEATHER COLORS on REQUEST