

Seating Finishes

The materials shown are purely indicative due to the inevitable differences of the typographical reproduction/display visualization

technical notes and maintenance

PA

Plastic material
Polyamide



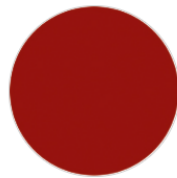
ncs s0500-n
pure white



ncs s4005-y20r
turtle-dove



ncs s7502-b
anthracite grey



ral 3003 ruby red
*(available while
stocks last)*

PE

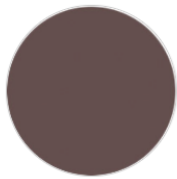
Plastic material
Roto-moulding polyethylene



ncs s4050-b40g
water blue



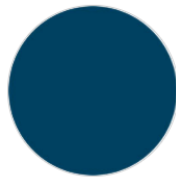
ncs s3060-y80r
coral red



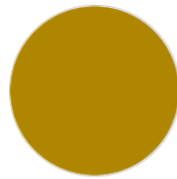
ncs s6502-r clay



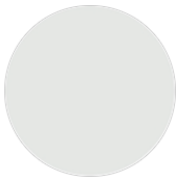
ncs s0500-n
pure white



ncs s6030-b
capri blue



ncs s3060-y curry



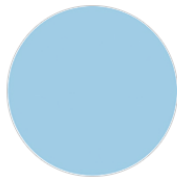
pantone 427 c ice
white
*(available while
stocks last)*



ral 8017 chocolate
brown
*(available while
stocks last)*



ral 6033 mint
turquoise
*(available while
stocks last)*



ncs s0530-r90b
sky-blue
*(available while
stocks last)*



ral 9004 signal black
*(available while
stocks last)*

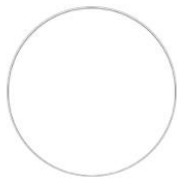
et al.

PP

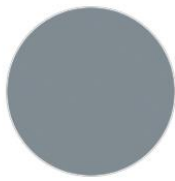
Plastic material
Polypropylene



ncs s0500-n
pure white



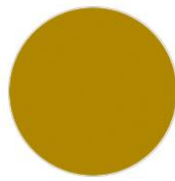
ncs s0502-b
traffic white



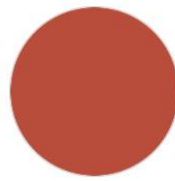
ncs s4005-b20g
squirrel grey



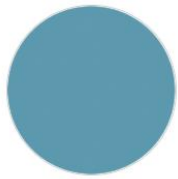
ncs s7502-b
anthracite grey



ncs s3060-y curry



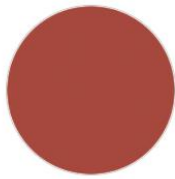
ncs s3060-y80r
coral red



ncs s4020-b10g
dusty blue



ncs s4050-b40g
water blue



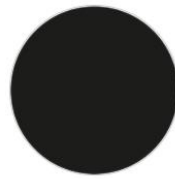
pantone 18-1438
marsala /
ncs s4040-r
marsala



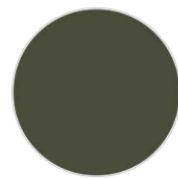
ncs s6030-b
capri blue



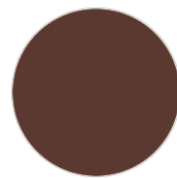
ncs s3050-g60y
fern green



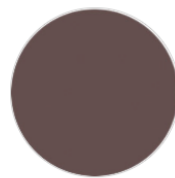
ncs s9000-n
jet black



ncs s7020-g50y
olive green



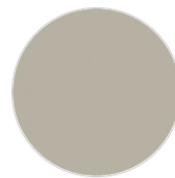
ncs s7005-y50r
cocoa
*(available while
stocks last)*



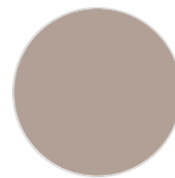
ncs s6502-r clay



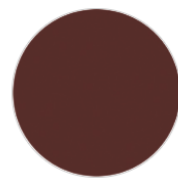
ncs s3010-g50y
pistachio



ncs s4005-y20r
turtle-dove



ncs s4005-y50r
turtle-dove



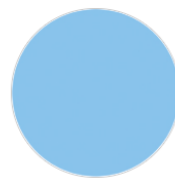
pantone 497 c
mocha
*(available while
stocks last)*



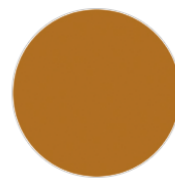
ral 6010 grass green
*(available while
stocks last)*



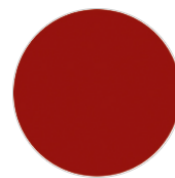
ral 6005 moss green
*(available while
stocks last)*



pantone 283 c sky
blue
*(available while
stocks last)*



ral 8001 ochre brown
*(available while
stocks last)*



ral 3003 ruby red
*(available while
stocks last)*

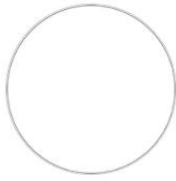


ral 1004 golden
yellow

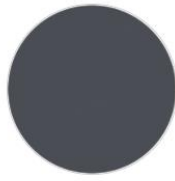
et al.

PP+PET

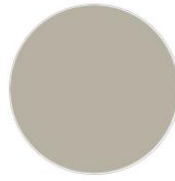
Plastic material
Technopolymer, multi-layer variable density



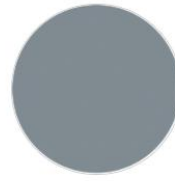
ncs s0502-b
traffic white



ncs s7502-b
anthracite grey



ncs s4005-y20r
turtle-dove



ncs s4005-b20g
squirrel grey

XLP

Plastic material
Xiloplast



white



black 1

LE

Wood
Wood



beech | honey
stained



beech | chesnut
stained



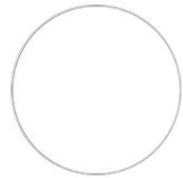
beech | grey stained



beech | dark brown
stained



beech | black stained



beech | stained
according to sample
