

Upholstery Collections

PEDRALI®

Material for upholstery and cushions

Rivestimenti per imbottiture e cuscini

Legend

Legenda

	CARD	FABRIC	FIRE RETARDANT FABRIC	OUTDOOR FABRIC	GENUINE HARD LEATHER	REGENERATED HARD LEATHER	LEATHER	SIMIL LEATHER	FIRE RETARDANT SIMIL LEATHER	VELVET	FIRE RETARDANT VELVET
Category A	09	●	●	●	●	●	●	●	●	●	●
Category B	07	●	●	●	●	●	●	●	●	●	●
Category C	04, 05, 06, 10, 11, 14	●	●	●	●	●	●	●	●	●	●
Category D	05, 07	●	●	●	●	●	●	●	●	●	●
Category E	08	●	●	●	●	●	●	●	●	●	●
Category F	13	●	●	●	●	●	●	●	●	●	●
Category G	01, 02, 03, 04, 06, 08, 14	●	●	●	●	●	●	●	●	●	●
Category H	05, 06, 08, 09, 11	●	●	●	●	●	●	●	●	●	●
Category N	03, 08	●	●	●	●	●	●	●	●	●	●
Category P	12	●	●	●	●	●	●	●	●	●	●



Fire-retardant
Ignifugo



Outdoor use
Adatto per uso esterno

washing / lavaggio



Do not wash
Lavaggio a secco



Hand wash
Lavaggio a mano



Wash at max 30°C normal
Lavaggio normale, max 30°C



Wash at max 30°C mild
Lavaggio delicato, max 30°C



Wash at max 40°C normal
Lavaggio normale, max 40°C



Wash at max 60°C mild
Lavaggio delicato, max 60°C

drying / asciugatura



Tumble dry at low temperature
Asciugatrice a bassa temperatura



Do not tumble dry
Non asciugare in asciugatrice



Dry flat
Asciugare disteso



Do not wring
Non strizzare

ironing / stiratura



Do not iron
Non stirare



Iron at low temperature
Stirare a bassa temperatura



Iron at medium temperature
Stirare a media temperatura

dry cleaning / lavaggio a secco



Do not dry clean
Lavaggio a secco non consentito



Dry clean, perchlorethylene (PCE)
Lavaggio a secco con percloroetilene (PCE)



Gentle dry cleaning with PCE
Lavaggio a secco delicato con PCE

bleaching / candeggio



Do not bleach
Non candeggiare



Any bleaching agent allowed
Candeggio consentito



Compliant to Ecolabel UE environmental requirements
Conforme ai requisiti ambientali Ecolabel UE



Product certified for low chemical emissions:
Prodotto certificato per basse emissioni di sostanze chimiche:
UL.COM/GG
UL 2818



96/98/CE – 2010/68/UE EU marine equipment rules compliant
Conforme ai requisiti europei per equipaggiamenti marittimi

Colours of samples are approximate. Pedrali S.p.A. reserves the right to modify or upgrade the products without prior notice.
I colori dei campioni sono indicativi. Pedrali S.p.A. si riserva la facoltà di apportare modifiche o migliorie senza alcun preavviso.

Fabrics

Tessuti

Category G

PEDRALI

G

	G59÷G69 G190÷G197	G70÷G78	G140÷G146
COMPOSITION COMPOSIZIONE	90% New wool 10% Nylon	90% New wool 10% Nylon	45% Recycled wool 45% New wool 10% Nylon
ABRASION ABRASIONE	100.000 cycles Martindale (DS/EN ISO 12947-2:2016)	80.000 cycles Martindale (DS/EN ISO 12947-2:2016)	50.000 cycles Martindale (DS/EN ISO 12947-2:2016)
RUBBING FASTNESS SOLIDITÀ ALLO SFREGAMENTO	/	/	Dry and Wet 4-5, scale 1-5 (ISO 105-X12)
PILLING	4, scale 1-5 (EN ISO 12945)	3-4, scale 1-5 (EN ISO 12945)	4, scale 1-5 (EN ISO 12945)
LIGHT FASTNESS SOLIDITÀ ALLA LUCE	5-7, scale 1-8 (EN ISO 105-B02)	5-7, scale 1-8 (ISO 105-B02)	5-7, scale 1-8 (ISO 105-B02:2014)
SOUND ABSORPTION ASSORBIMENTO ACUSTICO	folded: $\alpha_w = 0.95$ Class A (ISO 11654)	folded: $\alpha_w = 0.80$ Class B (ISO 11654)	folded: $\alpha_w = 0.75$ Class C (ISO 11654)
FLAME RESISTANCE RESISTENZA AL FUOCO	AS/NZS 1530.3 AS/NZS 3837 Class 2 BS 5852 Part 1 BS 5852 Crib 5 with treatment BS 5852 IGNITION SOURCE 3 EN 1021 - 1/2 GB 50222 B1 with treatment IMO FTP Code 2010: Part 8 NF D60-013 NFPA 260 ÖNORM B1/Q1 SN 198 898 5.3 with treatment UNI 9175 Classe 1 IM US CA TB 117-2013 - Compliant to the criteria certifying the absence of flame retardant chemicals (AB 2998)	AS/NZS 1530.3 BS 5852 crib 5 with treatment BS 5852 part 1 EN 1021-1/2 IMO FTP Code 2010 Part 8 NF D 60 013 NFPA 260 SN 198 898 5.3 with treatment UNI 9175 Classe 1 IM US CA TB 117-2013 - Compliant to the criteria certifying the absence of flame retardant chemicals (AB 2998)	AS/NZS 1530.3 AS/NZS 3837 Class 2 BS 5852 Part 1 BS 5852 Crib 5 with treatment BS 5852 IGNITION SOURCE 3 EN 1021 - 1/2 IMO FTP Code 2010: Part 8 NF D60-013 ÖNORM B1/Q1 UNI 9175 Classe 1 IM US CA TB 117-2013 - Compliant to the criteria certifying the absence of flame retardant chemicals (AB 2998)
APPROVED OMOLOGATO	   PRODUCT CERTIFIED FOR LOW CHEMICAL EMISSIONS: UL COM/GG UL 2316 170166-420		
CLEANING LAVAGGIO	    		



Collection / Collezione

• **kvadrat**

STEELCUT TRIO

from G59 to G69

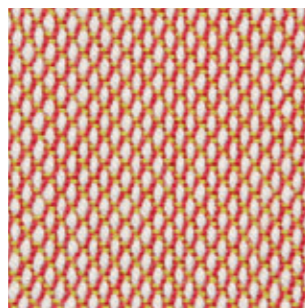
from G190 to G197

STEELCUT

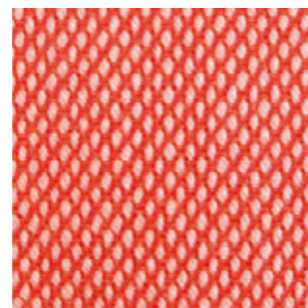
from G70 to G78

DESIGNERS Dijkmeijer & Ridolfo

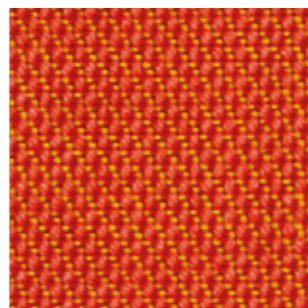
G 59



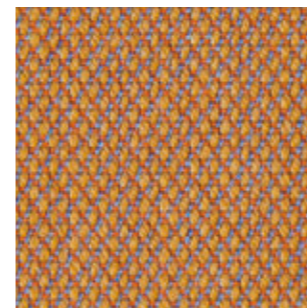
G 192



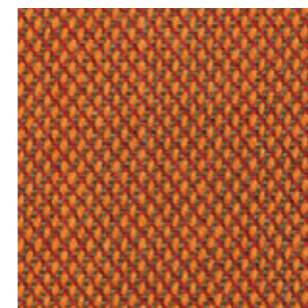
G 69



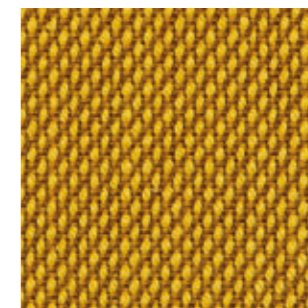
G 190



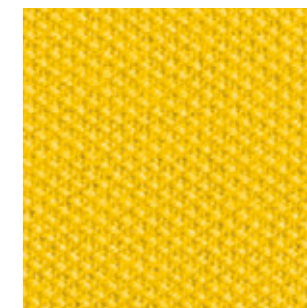
G 191



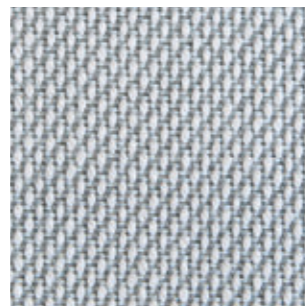
G 67



G 78



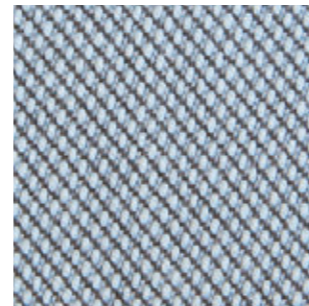
G 193



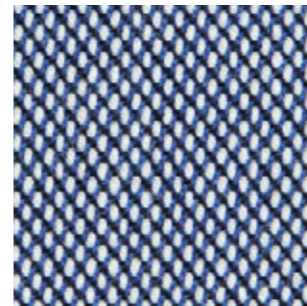
G 194



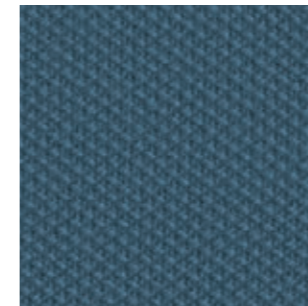
G 195



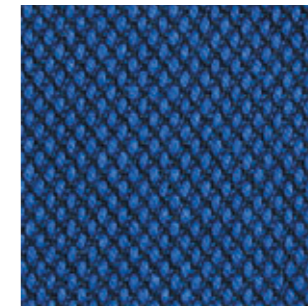
G 196



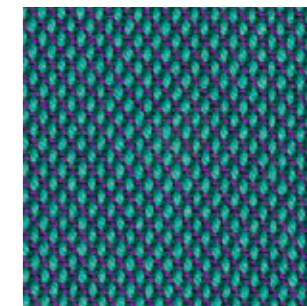
G 75



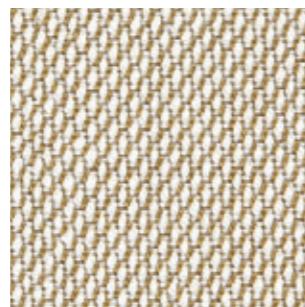
G 197



G 68



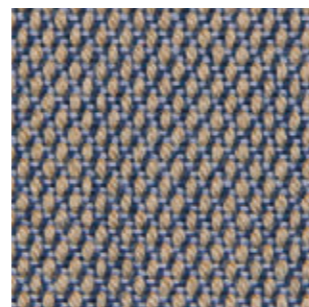
G 66



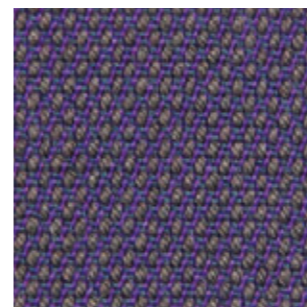
G 71



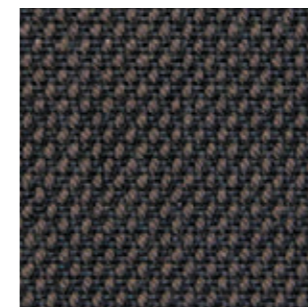
G 64



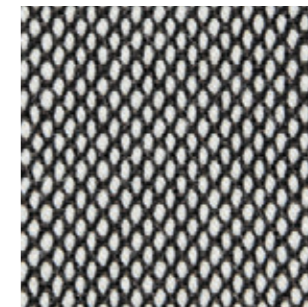
G 61



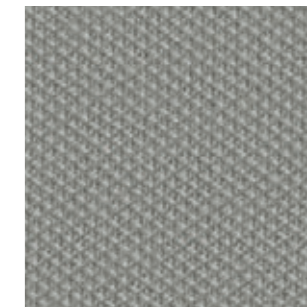
G 65



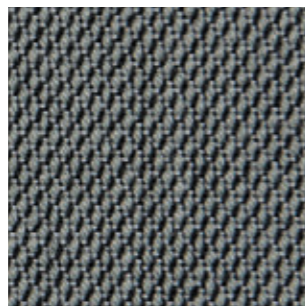
G 63



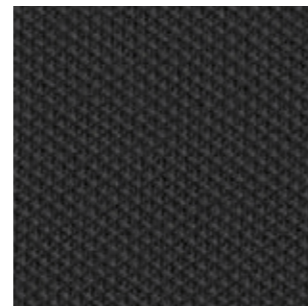
G 73



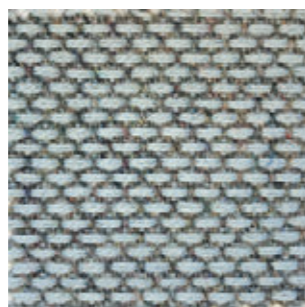
G 62



G 70



G 143



G 145



G 144



G 146



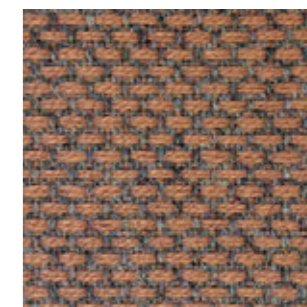
G 140



G 141



G 142



Collection / Collezione

• **kvadrat**

RE-WOOL

from G140 to G146

DESIGNER Margrethe Odgaard




Fabrics

Tessuti

Category G

PEDRALI

G

	G21÷G24 G110÷G116	G160÷G169	G07
COMPOSITION COMPOSIZIONE	100% New wool	96% New wool 4% Nylon	88% Polyester 12% Polyurethane
ABRASION ABRASIONE	45.000 cycles Martindale (EN ISO 12947)	45.000 cycles Martindale (EN ISO 12947)	150.000 cycles Martindale (EN ISO 12947)
RUBBING FASTNESS SOLIDITÀ ALLO SFREGAMENTO	/	/	Dry 5 and Wet 4/4, scale 1-5 (ISO 105-X12)
PILLING	3, scale 1-5 (EN ISO 12945)	3-4, scale 1-5 (EN ISO 12945)	5, scale 1-5 (EN ISO 12945)
LIGHT FASTNESS SOLIDITÀ ALLA LUCE	5-7, scale 1-8 (ISO 105-B02)	5-7, scale 1-8 (ISO 105-B02)	5-6, scale 1-8 (ISO 105-B02)
SOUND ABSORPTION ASSORBIMENTO ACUSTICO	folded: $\alpha_w = 0.70$ Class C (ISO 11654)	folded: $\alpha_w = 0.75$ Class C (ISO 11654)	/
FLAME RESISTANCE RESISTENZA AL FUOCO	AS/NZS 1530.3 BS 5852 Crib 5 BS 5852 Part 1 BS 5867 part 2 type B EN 1021-1/2 EN 13501, C-s1, d0, glued GB 50222 B1 with treatment IMO FTP Code 2010: Part 8 NF D60-013 NFPA 260 ÖNORM B1/ Q1 SN 198 898 5.3 with treatment UNI 9175 Classe 1 IM US CA TB 117-2013 - Compliant to the criteria certifying the absence of flame retardant chemicals (AB 2998)	AS/NZS 3837 Class 2 BS 5852 Crib 5 with treatment BS 5852 Part 1 EN 1021 - 1/2 IMO FTP Code 2010: Part 8 IMO FTP Code 2010: Part 7 with treatment NF D60-013 SN 198 898 5.3 with treatment UNI 9175 Classe 1 IM US CA TB 117-2013 - Compliant to the criteria certifying the absence of flame retardant chemicals (AB 2998)	BS EN 1021 1&2 BS EN 1021- ÖNORM A3800-B2-B3825-Q1 UK NF P 92-503 M3 US CA TB 117-2013
APPROVED OMOLOGATO	 	 	/
CLEANING LAVAGGIO	    	    	



G

Collection / Collezione

• kvadrat

DIVINA MELANGE
from G21 to G24

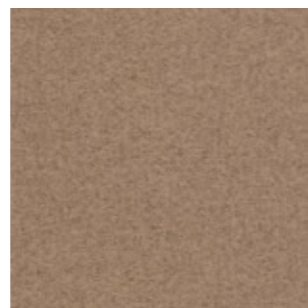
DIVINA MD
from G110 to G116

DESIGNER Finn Skødt

G 24



G 114



G 115



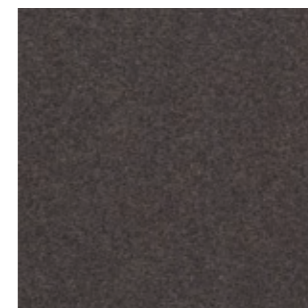
G 113



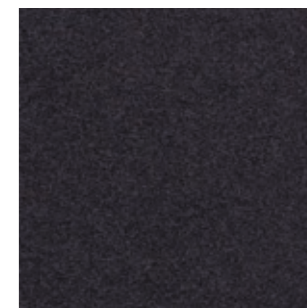
G 111



G 116



G 110



G 112



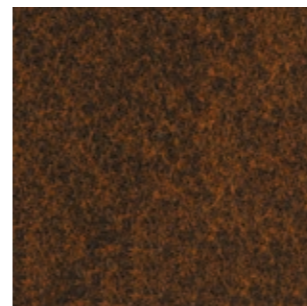
G 21



G 22



G 23



Collection / Collezione

• kvadrat

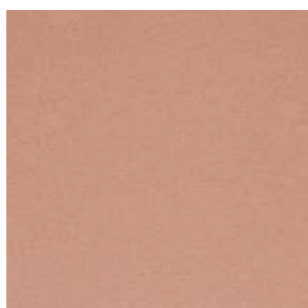
HERO
from G160 to G169

DESIGNER Patricia Urquiola

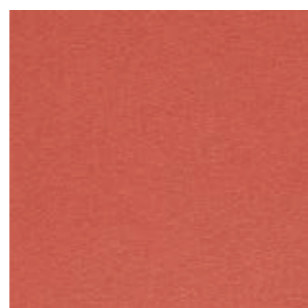
G 163



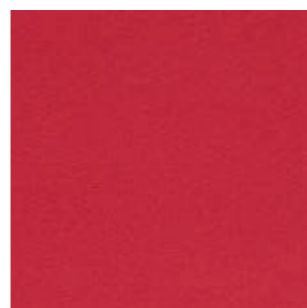
G 160



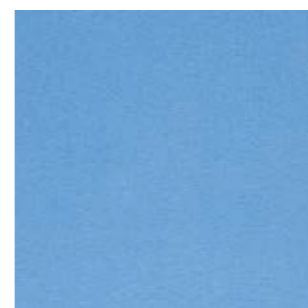
G 161



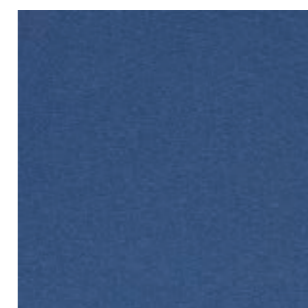
G 162



G 165



G 166



G 167



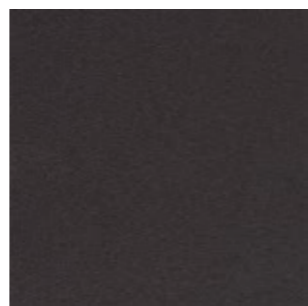
G 168



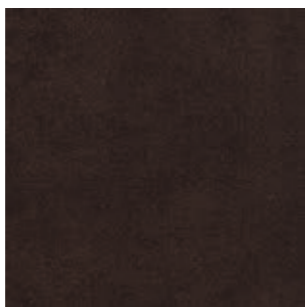
G 164



G 169









G 07



Fabrics Tessuti

Category G | N

PEDRALI®

	G 			N 
	G100÷G102	G120÷G122	G220÷G225	N01÷N08
COMPOSITION COMPOSIZIONE	90% New wool 10% Nylon	100% New wool	52% Cotton 22% Viscose 14% Polyacrylic 6% Linen 3% Nylon 3% Polyester	58% New wool 25% Viscose 8% Linen 5% Nylon 4% Polyester
ABRASION ABRASIONE	50.000 cycles Martindale (EN ISO 12947-2:1998)	75-100.000 cycles Martindale (EN ISO 12947-2:1998)	50.000 cycles Martindale (EN ISO 12947)	50.000 cycles Martindale (EN ISO 12947)
PILLING	4, scale 1-5 (EN ISO 12945)	3-4, scale 1-5 (EN ISO 12945)	4-5, scale 1-5 (EN ISO 12945)	3, scale 1-5 (EN ISO 12945)
LIGHT FASTNESS SOLIDITÀ ALLA LUCE	6-7, scale 1-8 (ISO 105-B02)	6-7, scale 1-8 (ISO 105-B02)	5-7, scale 1-8 (ISO 105-B02)	N03, N04: 5-7, scale 1-8 (ISO 105-B02) N01, N02, N05+N08 4-7, scale 1-8 (ISO 105-B02)
RUBBING FASTNESS SOLIDITÀ ALLO SFREGAMENTO	/	/	/	N01, N02, N05+N08 Dry 4-5 and Wet 3-5, scale 1-5 (EN ISO 105-X12)
FLAME RESISTANCE RESISTENZA AL FUOCO	AS/NZS 3837 Class 2 BS 5852 Part 1 BS 5852 Crib 5 with treatment EN 1021 - 1/2 GB 50222 B1 with treatment IMO FTP Code 2010: Part 8 NFPA 260 NF D60-013 ÖNORM B1/Q1 SN 198 898 5.3 with treatment UNI 9175 Classe 1 IM US CA TB 117-2013 - Compliant to the criteria certifying the absence of flame retardant chemicals (AB 2998)	BS 5852 Part 1 BS 5852 Crib 5 with treatment EN 1021 - 1/2 IMO FTP Code 2010: Part 8 NFPA 260 NF D60-013 ÖNORM B1/Q1 UNI 9175 Classe 1 IM US CA TB 117-2013 - Compliant to the criteria certifying the absence of flame retardant chemicals (AB 2998)	BS 5852 crib 5 with treatment BS 5852 part 1 EN 1021-1/2 US CA TB 117-2013 - Compliant to the criteria certifying the absence of flame retardant chemicals (AB 2998)	N03, N04: AS/NZS 3837, class 2 BS 5852 Part 1 BS 5852 Crib 5 with treatment DIN 4102 B2 EN 1021 - 1/2 NFPA 260 US CA TB 117-2013 - Compliant to the criteria certifying the absence of flame retardant chemicals (AB 2998)
APPROVED OMOLOGATO	   PRODUCT CERTIFIED FOR LOW CHEMICAL EMISSIONS: UL.COMGG UL 2919 170166-420			 
CLEANING LAVAGGIO				



Collection / Collezione

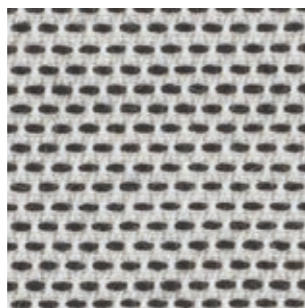
• **kvadrat**

BASEL

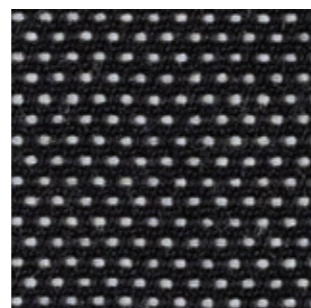
from G100 to G102

DESIGNERS Herzog & de Meuron

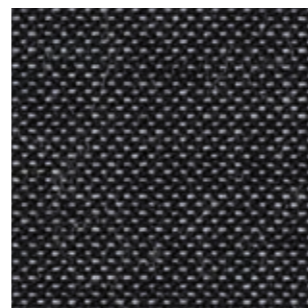
G 101



G 100



G 102



G 120



G 121



G 122



Collection / Collezione

• **kvadrat**

MOLLY

from G120 to G122

DESIGNER Åsa Pärson

G 225



G 220



G 221



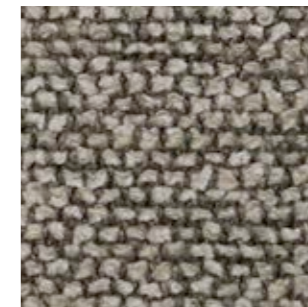
G 222



G 223



G 224



Collection / Collezione

• **kvadrat-SAHCC**

MOSS

from G220 to G225

DESIGNER Vincent Van Duysen



Collection / Collezione

• **kvadrat**

SUNNIVA

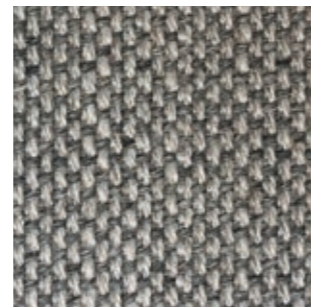
from N01 to N08

DESIGNERS
Raf Simons & Fanny Aronsen

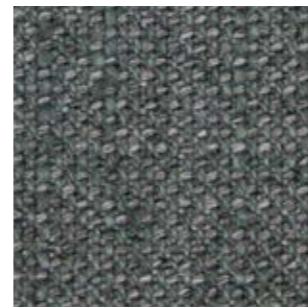
N 05



N 01



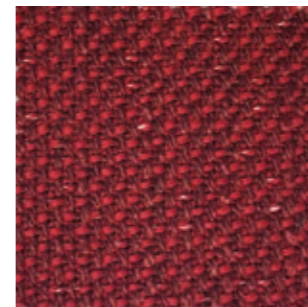
N 02



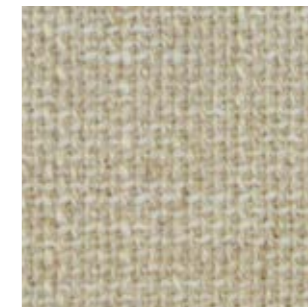
N 03



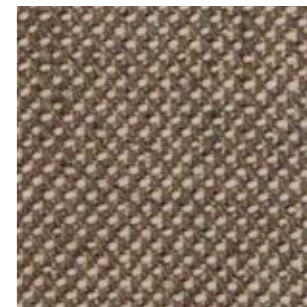
N 04



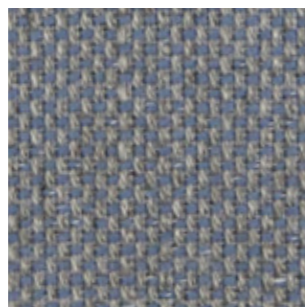
N 06



N 07



N 08



Fabrics

Tessuti

Category C | G

PEDRALI

FABRICS / TESSUTI

	C 	G 
	C110÷C122	G150÷G156
COMPOSITION COMPOSIZIONE	85% Wool 15% Polyamide	82% Wool 12% Rami 6% Polyamide
ABRASION ABRASIONE	100.000 cycles Martindale (EN ISO 12947-2)	100.000 cycles Martindale (EN ISO 12947-2)
RUBBING FASTNESS SOLIDITÀ ALLO SFREGAMENTO	Dry 4 and Wet 3-4, scale 1-5 (EN ISO 105-X12)	Dry 4 and Wet 3-4, scale 1-5 (EN ISO 105-X12)
LIGHT FASTNESS SOLIDITÀ ALLA LUCE	5-7, scale 1-8 (EN ISO 105-B02)	5-7, scale 1-8 (EN ISO 105-B02)
FLAME RESISTANCE RESISTENZA AL FUOCO	BS 5852 Crib 5 EN ISO 1021 part 1&2 IMO FTP Code 2010: Part 8 UNI 9175 Classe 1 IM US CA TB 117-2013 - Compliant to the criteria certifying the absence of flame retardant chemicals (AB 2998)	BS 5852 Crib 5 EN ISO 1021 Part 1&2 IMO FTP Code 2010: Part 8 UNI 9175 Classe 1 IM US CA TB 117-2013 - Compliant to the criteria certifying the absence of flame retardant chemicals (AB 2998)
APPROVED OMOLOGATO	 	
CLEANING LAVAGGIO	    	    



C

Collection / Collezione

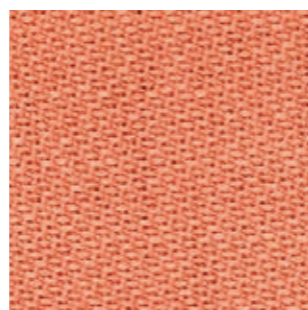
• **svensson**

SEMI
from C110 to C122

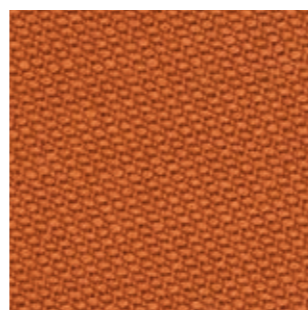
C110



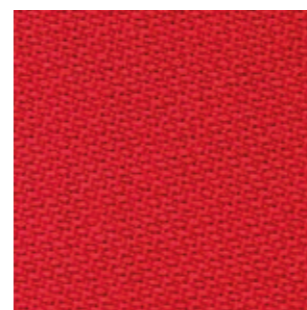
C111



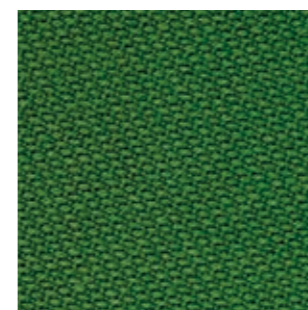
C112



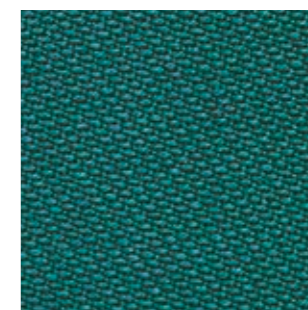
C113



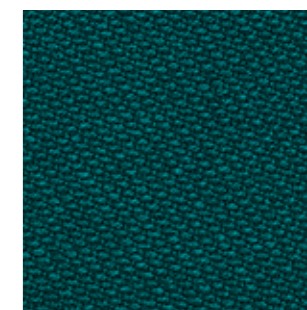
C117



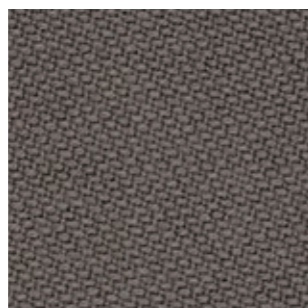
C118



C119



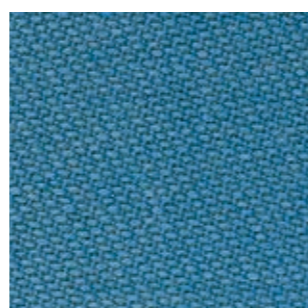
C115



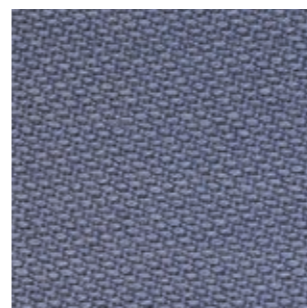
C116



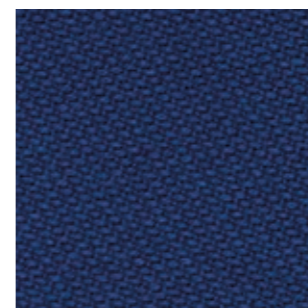
C120



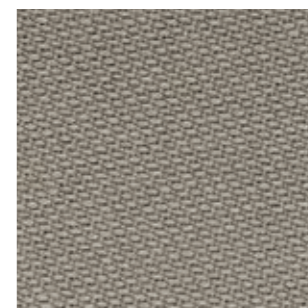
C121



C122



C114



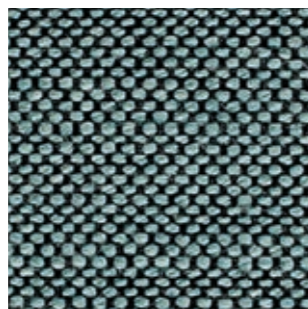
G

Collection / Collezione

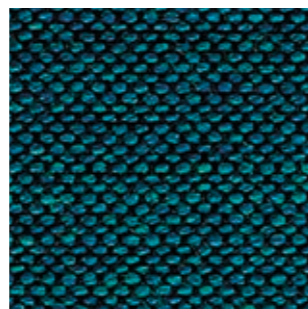
• **svensson**

BALANCE
from G150 to G156

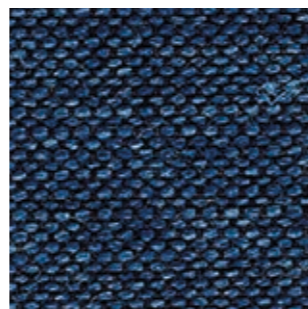
G 154



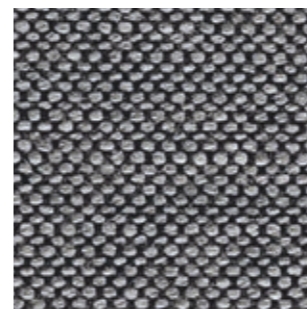
G 155



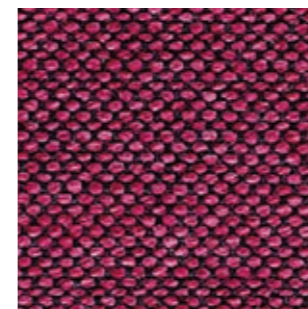
G 156



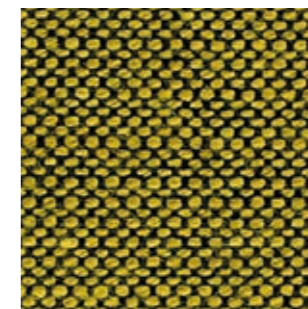
G 151



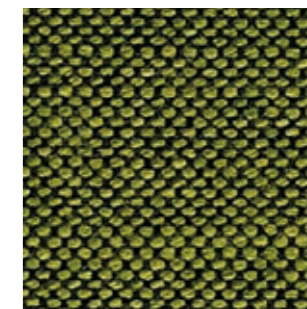
G 150



G 152



G 153





Fabrics

Tessuti

Category C | D | H

FABRICS / TESSUTI

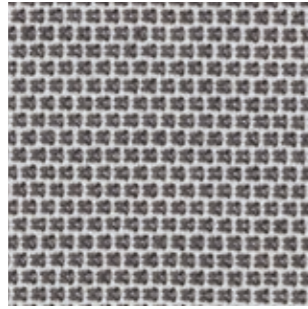
	C 	D 	H 
	C83÷C89 C100, C101	D40÷D44	H60
COMPOSITION COMPOSIZIONE	54% New Zealand Wool 44% Post-consumer recycled, polyester 2% Polyamide	88% New Zealand Wool 12% Polyamide	92% New Zealand Wool 8% Polyamide
ABRASION ABRASIONE	100.000 cycles Martindale (EN ISO 12947-2)	100.000 cycles Martindale (EN ISO 12947-2)	200.000 cycles Martindale (EN ISO 12947-2)
RUBBING FASTNESS SOLIDITÀ ALLO SFREGAMENTO	Dry and Wet 4-5, scale 1-5 (EN ISO 105-X12:1995)	Dry and Wet 4-5, scale 1-5 (EN ISO 105-X12)	Dry and Wet 4-5, scale 1-5 (EN ISO 105-X12)
PILLING	4-5, scale 1-5 (EN ISO 12945-2)	4-5, scale 1-5 (EN ISO 12945-2)	4, scale 1-5 (EN ISO 12945-2)
LIGHT FASTNESS SOLIDITÀ ALLA LUCE	5-7, scale 1-8 (EN ISO 105-B02)	5-7, scale 1-8 (EN ISO 105-B02)	5-7, scale 1-8 (EN ISO 105-B02)
FLAME RESISTANCE RESISTENZA AL FUOCO	BS EN 1021 1&2 BS EN 1021-1 ÖNORM A3800-1 US CA TB 117-2013 - Compliant to the criteria certifying the absence of flame retardant chemicals (AB 2998)	BS EN 1021 1&2 BS 5852 Part 1 0, 1 UNI 9175 Classe 1 IM US CA TB 117-2013 - Compliant to the criteria certifying the absence of flame retardant chemicals (AB 2998)	BS EN 1021 1&2 BS EN 1021-1 BS 5852 Part 1 0, 1 UNI 9175 Classe 1 IM US CA TB 117-2013
APPROVED OMOLOGATO			
CLEANING LAVAGGIO			

PEDRALI

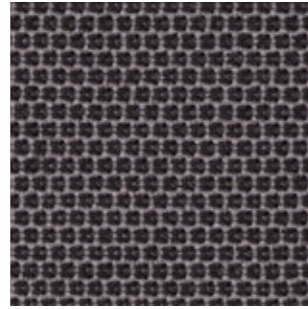


C

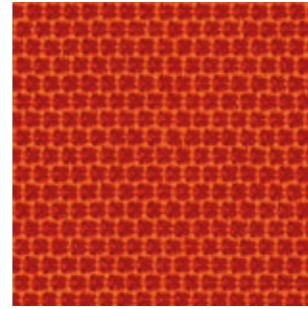
C 101



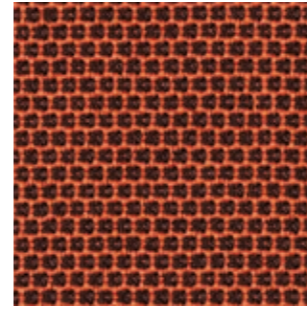
C 86



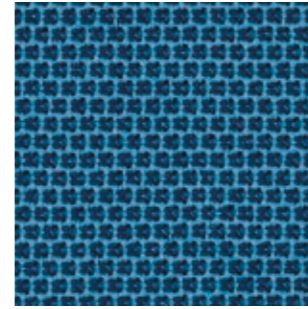
C 85



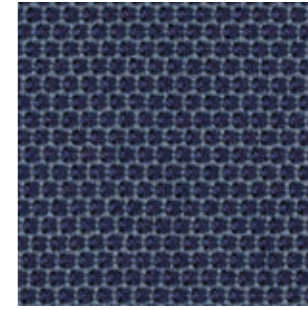
C 89



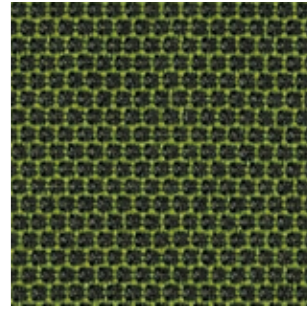
C 83



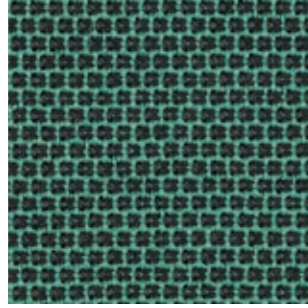
C 100



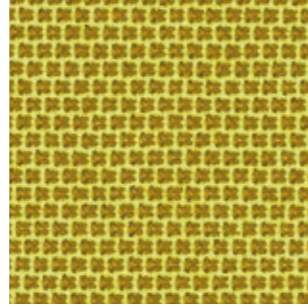
C 84



C 88

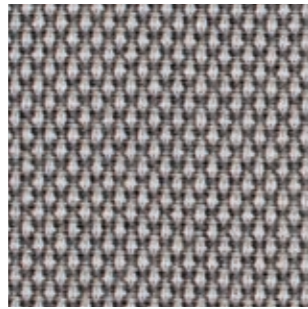


C 87

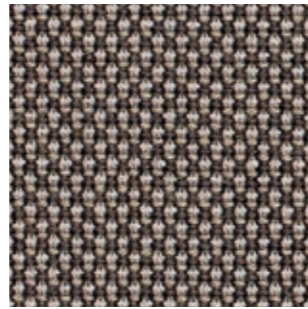


D

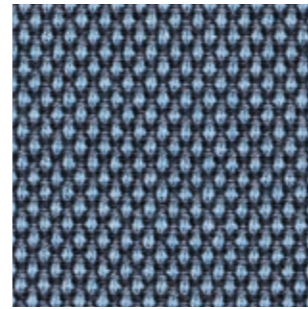
D 40



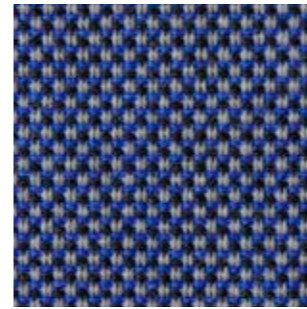
D 41



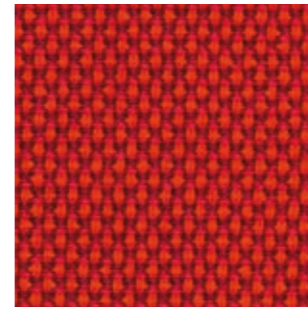
D 43



D 44

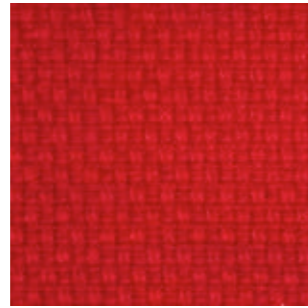


D 42



H

H 61



Fabrics

Tessuti

Category C | G | H

PEDRALI

C

G 




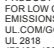


H 

C36÷C39

G130÷G133

G170÷G176 | G210÷G213

H120÷H127

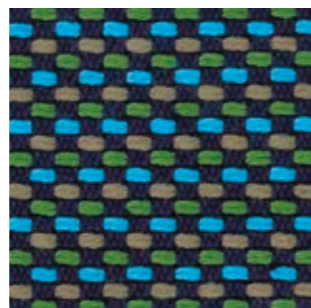
COMPOSITION COMPOSIZIONE	94% Cotton 6% Polyamide	95% Virgin Wool 5% Polyamide	96% Virgin Wool 4% Polyamide	90% New Wool 10% Nylon
ABRASION ABRASIONE	40.000 cycles, Martindale (BS EN ISO 12947-2 1999)	52.000 cycles Martindale (DIN EN ISO 12947-2)	90.000 cycles Martindale (DIN EN ISO 12947-2)	100.000 cycles Martindale (EN ISO 12947)
RUBBING FASTNESS SOLIDITÀ ALLO SFREGAMENTO	Dry 4-5 and Wet 2-3, scale 1-5 (BS EN ISO 105-X12:1995)	/	/	Dry 4-5 and Wet 3-5, scale 1-5 (EN ISO 105-X12)
PILLING	4, scale 1-5 (BS EN ISO 12945-2:2001 to 5.000 cycles)	4-5, scale 1-5 (EN ISO 12945-2)	4-5, scale 1-5 (EN ISO 12945-2)	4, scale 1-5 (EN ISO 12945)
LIGHT FASTNESS SOLIDITÀ ALLA LUCE	4-5 (light colours) 5 (medium-dark colours) (BS EN ISO 105-B02:2001)	5-8, scale 1-8 (EN ISO 105-B02)	5-8, scale 1-8 (EN ISO 105-B02)	5-7, scale 1-8 (EN ISO 105-B02)
SOUND ABSORPTION ASSORBIMENTO ACUSTICO	/	folded: $\alpha_w = 0.85$ Class B (ISO 11654)	folded: $\alpha_w = 0.95$ Class A (ISO 11654)	folded: $\alpha_w = 0.80$ Class B (EN ISO 354)
FLAME RESISTANCE RESISTENZA AL FUOCO	/	BS 5852:1979 (Part 1) BS 5852:2006 (Part 2) Crib 5 DIN 4102-1 B2 EN 1021 -1 and -2 EN 13501-1 FAR 25.853 (12 sec. vertical) IMO: 2014/90/EU (MED) UNI 9175 Classe 1 IM US CA TB 117-2013 - Compliant to the criteria certifying the absence of flame retardant chemicals (AB 2998)	BS 5852:1979 (Part 1) BS 5852:2006 (Part 2) Crib 5 DIN 4102-1 B2 EN 13501-1 EN 1021 -1 and -2 FAR 25.853 (12 sec. vertical) IMO: 2014/90/EU (MED) UNI 9175 Classe 1 IM US CA TB 117-2013 - Compliant to the criteria certifying the absence of flame retardant chemicals (AB 2998)	AS/NZS 1530.3 AS/NZS 3837 Class 2 ASTM E84 class A BS 5852 Crib 5 with treatment BS 5852 IGNITION SOURCE 3 BS 5852 Part 1 EN 1021 - 1/2 GB 50222 B1 with treatment IMO FTP Code 2010: Part 7 with treatment IMO FTP Code 2010: Part 8 NF D60-013 NFPA 260 ÖNORM B1/Q1 SN 198 898 5.3 with treatment UNI 9175 Classe 1 IM US CA TB 117-2013 - Compliant to the criteria certifying the absence of flame retardant chemicals (AB 2998)
APPROVED OMOLOGATO	/			   <small>PRODUCT CERTIFIED FOR LOW CHEMICAL EMISSIONS: UL.COM/SGG UL 2818 170166-420</small>
CLEANING LAVAGGIO				

C

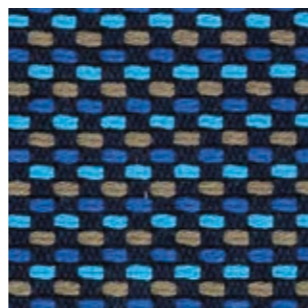
C 37



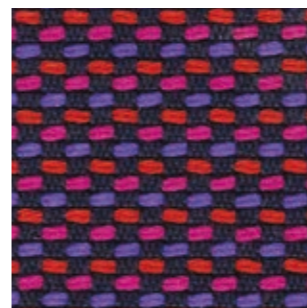
C 38



C 39

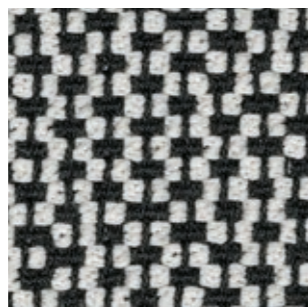


C 36



G

G 130



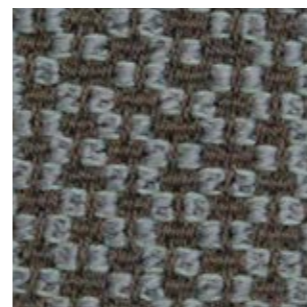
G 131



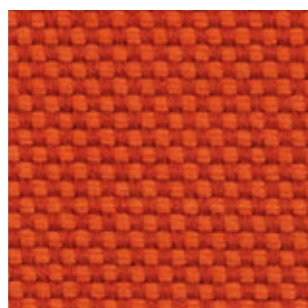
G 132



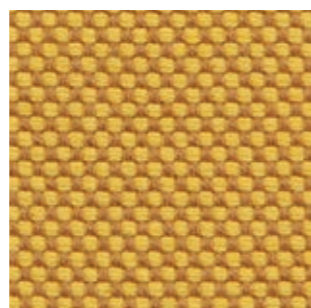
G 133



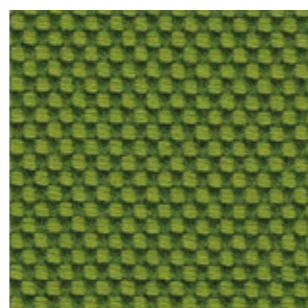
G 170



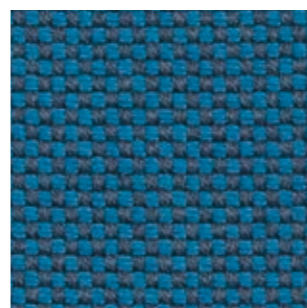
G 171



G 172



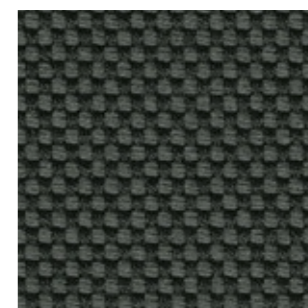
G 173



G 174



G 175



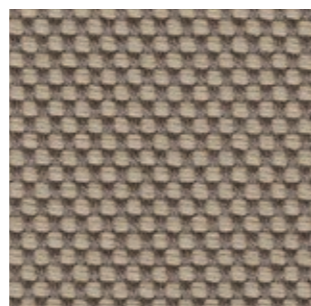
G 176



G 210



G 211



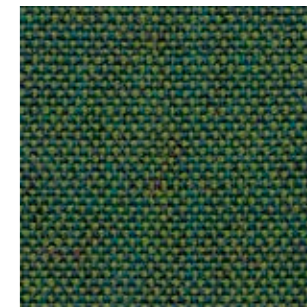
G 212



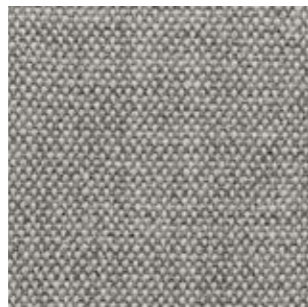
G 213



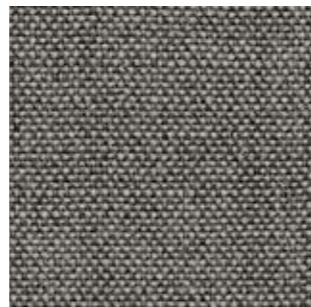
H 127



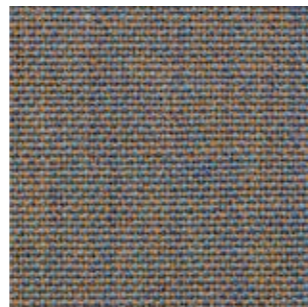
H 120



H 121



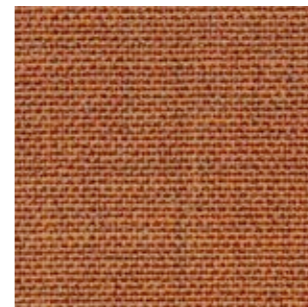
H 122



H 123



H 124



H 125



H 126



H

Collection / Collezione

• kvadrat

REMIX
from H120 to H127

DESIGNER Giulio Ridolfo

Fabrics

Tessuti

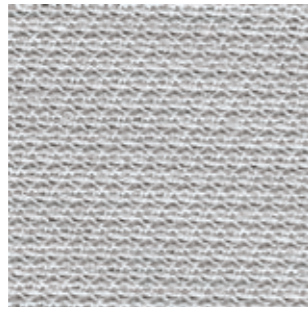
Category B | D 

PEDRALI

	B	D 	only for outdoor collections cushions solo per cuscini delle collezioni outdoor		
	B01÷B02	D80÷D89	D100÷D105	D110÷D114	D22÷D26
COMPOSITION COMPOSIZIONE	100% Nylon (Support film PVC)	100% Acrylic	100% Polypropylene	88% PP 12% PL	100% Polypropylene
ABRASION ABRASIONE	>50.000 cycles, Martindale (EN ISO 12947:00)	> 20.000 cycles, Martindale (EN ISO 5470-2)	50.000 cycles, Martindale (EN ISO 12947/2:2000)	30.000 cycles, Martindale (EN ISO 12947-2)	> 30.000 cycles, Martindale (EN ISO 12947-2)
RUBBING FASTNESS SOLIDITÀ ALLO SFREGAMENTO	5, scale 1-5 (EN ISO 105 X12:97)	/	Dry 4-5 and Wet 4/5-5, scale 1-5 (EN ISO 105-X12:2003)	Dry 4-5 and Wet 4, scale 1-5 (EN ISO 105-X12)	Dry and Wet 4-5, scale 1-5 (EN ISO 105-X12)
PILLING	5, scale 1-5 (EN ISO 12945-2:00)	/	4/5, scale 1-5 (EN ISO 12945/2:2002)	4, scale 1-5 (EN ISO 12945-2 to 5.000 rubs)	5, scale 1-5 (ISO 12945-2 to 5.000 cycles)
LIGHT FASTNESS SOLIDITÀ ALLA LUCE	5, scale 1-8 (EN ISO 105-B02:01)	8, scale 1-8 (EN ISO 105 - B04)	7, scale 1-8 (EN ISO 105-B02:2004)	7-8, scale 1-8 (EN ISO 105-B02)	7, scale 1-8 (EN ISO 105-B02)
WATER FASTNESS SOLIDITÀ ALL'ACQUA	/	8, scale 1-8 (EN ISO 105 - B04)	> 7, scale 1-8 (EN ISO 105-B04:1994)	4-5, scale 1-5 (EN ISO 105-E02)	5, scale 1-5 (EN ISO 105-E01)
FLAME RESISTANCE RESISTENZA AL FUOCO	/	/	/	BS 5852 Part 1 US CA TB 117-2013 - Compliant to the criteria certifying the absence of flame retardant chemicals (AB 2998)	US CA TB 117-2013
APPROVED OMOLOGATO	/		/	/	/
CLEANING LAVAGGIO	   	   	   	   	   

B

B 01



B 02



only for collection /
solo per collezione

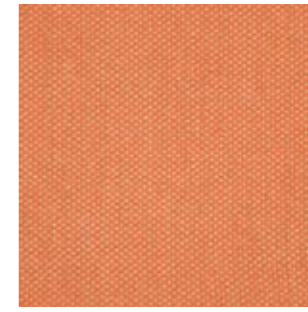


Island

D 87



D 88



D 89



D

only for outdoor collections
cushions / solo per cuscini
delle collezioni outdoor

Collection / Collezione

• **PEDRALI**

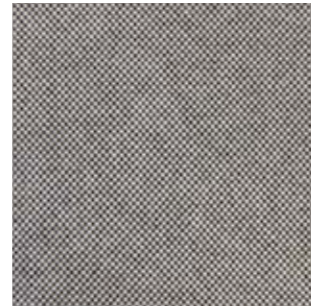
FLORIDA

from D80 to D89

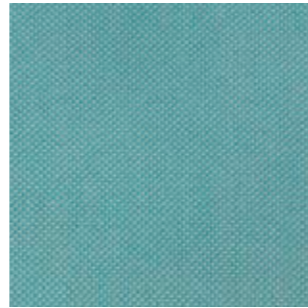
D 80



D 81



D 82



D 83



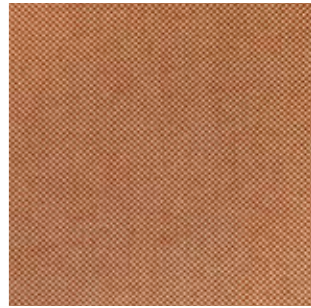
D 84



D 85



D 86



D 100



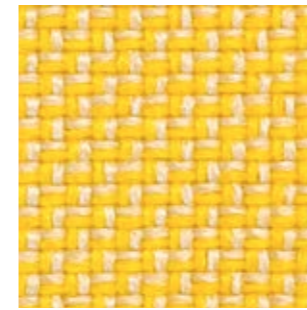
D 101



D 105



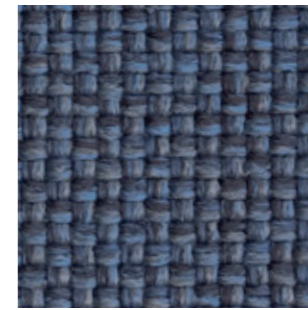
D 102



D 103



D 104



Collection / Collezione

• **PEDRALI**

ZEFIRO

from D100 to D105

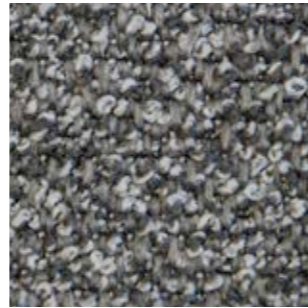
D 110



D 111



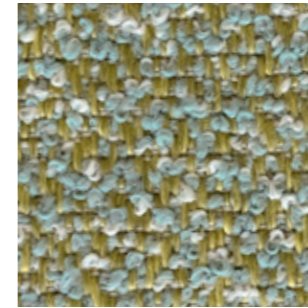
D 112



D 113



D 114



Collection / Collezione

• **PEDRALI**

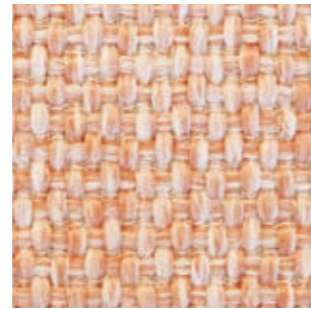
SAND

from D110 to D114

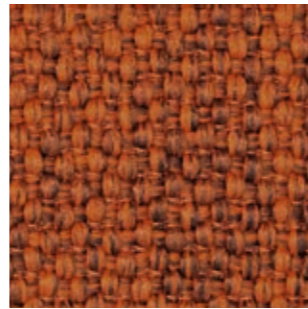
D 22



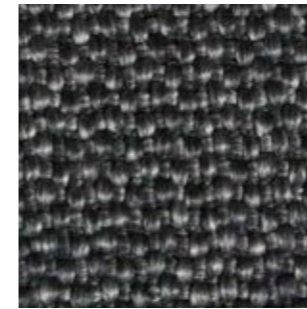
D 23



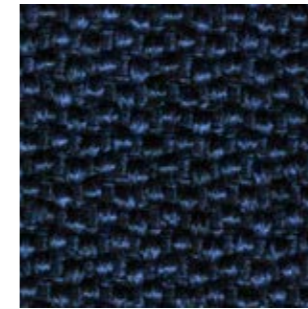
D 24



D 25



D 26



Collection / Collezione

• **PEDRALI**



BREZZA

from D22 to D26

Fabrics Tessuti

Category C | G

PEDRALI

	C 	G 
	C210÷C217	G200÷G206
COMPOSITION COMPOSIZIONE	100% TREVIRA CS®	92% New wool 8% Nylon
ABRASION ABRASIONE	80.000 cycles Martindale (EN ISO 12947)	80.000 cycles Martindale (EN ISO 12947)
PILLING	4-5, scale 1-5 (EN ISO 12945)	4, scale 1-5 (EN ISO 12945)
RUBBING FASTNESS SOLIDITÀ ALLO SFREGAMENTO	Dry and Wet 4-5, scale 1-5 (EN ISO 105-X12)	Dry 4-5 and Wet 3-5, scale 1-5 (EN ISO 105-X12)
LIGHT FASTNESS SOLIDITÀ ALLA LUCE	5-7, scale 1-8 (EN ISO 105-B02)	6-7, scale 1-8 (EN ISO 105-B02)
SOUND ABSORPTION ASSORBIMENTO ACUSTICO	folded: $\alpha_w = 0.70$ Class C (EN ISO 354)	/
FLAME RESISTANCE RESISTENZA AL FUOCO	AS/NZS 3837 class 2 BS 5852 Crib 5 BS 5852 Part 1 with treatment DIN 4102 B1 EN 1021-1/2 IMO FTP Code 2010: Part 8 NF D60-013 NF P92 507 M1 NFPA 701 ÖNORM B1/Q1 SN 198 898 5.2 UNI 9177 Classe 1 UNI 9175 Classe 1 IM US CA TB 117-2013	AS/NZS 1530.3 BS 5852 Part 1 BS 5852 Crib 5 with treatment BS 5852 ignition source 3 EN 1021-1/2 IMO FTP Code 2010: Part 8 NF D60-013 SN 198 898 5.3 with treatment UNI 9175 Classe 1 IM US CA TB 117-2013 - Compliant to the criteria certifying the absence of flame retardant chemicals (AB 2998)
APPROVED OMOLOGATO	 	  <small>PRODUCT CERTIFIED FOR LOW CHEMICAL EMISSIONS: UL.COM/IGG UL 2818 170166-420</small>
CLEANING LAVAGGIO	    	    



C

Collection / Collezione

• **kvadrat**

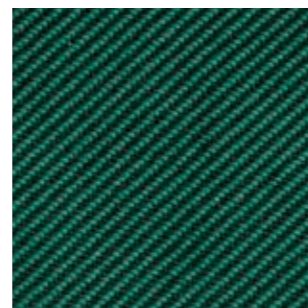
RELATE
from C210 to C217

DESIGNER Patricia Urquiola

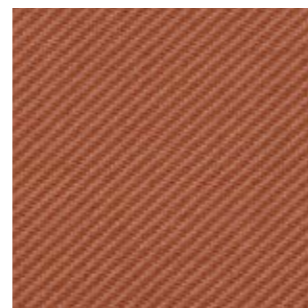
C 210



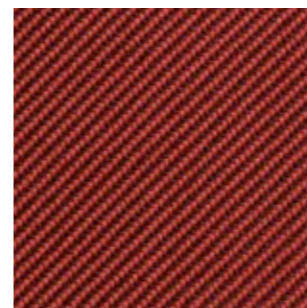
C 211



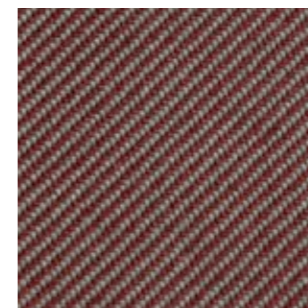
C 212



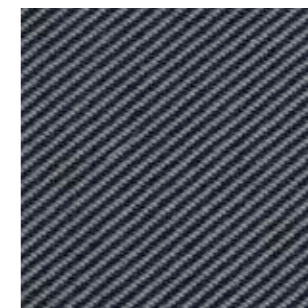
C 213



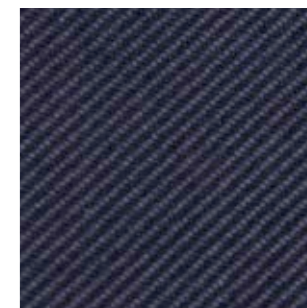
C 214



C 215



C 216



C 217



G

Collection / Collezione

• **kvadrat**

JAALI
from G200 to G206

DESIGNER Doshi Levien

G 200



G 201



G 202



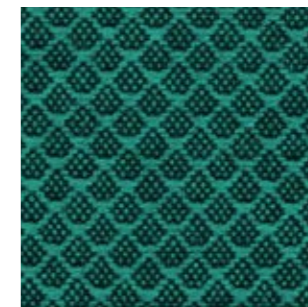
G 203



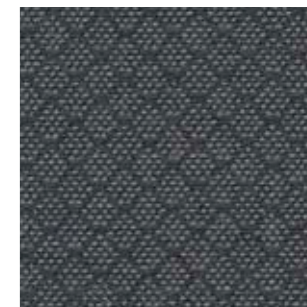
G 204



G 205



G 206



Simil Leather

Finta Pelle

Category C

PEDRALI

SIMIL LEATHER / FINTA PELLE

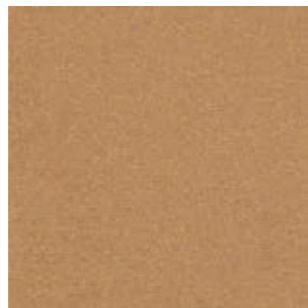
C 

	C130÷C141	C60÷C64 C90÷C95
COMPOSITION COMPOSIZIONE	76% PVC 22% PES 2% Polyurethane	72% PVC 25% Cotton 3% Polyurethane
ABRASION ABRASIONE	60.000 cycles Martindale (ISO 5470-2)	50.000 cycles Martindale (EN ISO 5470-2)
RUBBING FASTNESS SOLIDITÀ ALLO SFREGAMENTO	Dry and Wet 4-5, scale 1-5 (ISO 105-X12)	Dry and Wet 4-5, scale 1-5 (EN ISO 105-X12)
LIGHT FASTNESS SOLIDITÀ ALLA LUCE	6, scale 1-8 (ISO 105-B02)	6, scale 1-8 (EN ISO 105-B02)
FLAME RESISTANCE RESISTENZA AL FUOCO	BS 5852-1 match test EN 1021 Part 1-2 UNI 9175 Classe 1 IM US CA TB 117-2013	BS 5852-1 Part 1 EN 1021-2 IMO RESOLUTION A.652 (16): 1989 UNI 9175 Classe 1 IM US CA TB 117-2013
CLEANING LAVAGGIO		



C

C 62



C 63



C 64



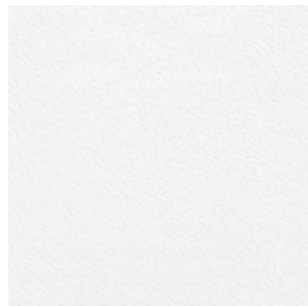
C 60



C 61



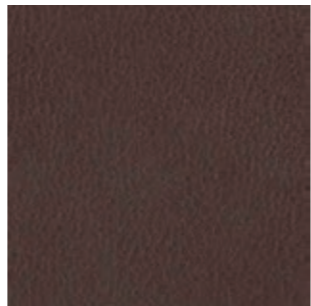
C 90



C 94



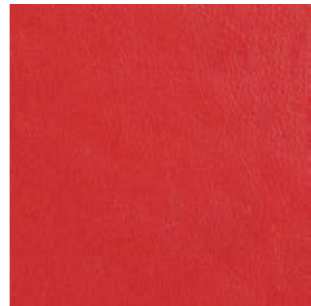
C 95



C 93



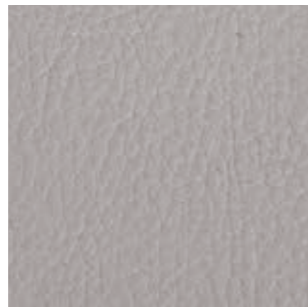
C 92



C 91



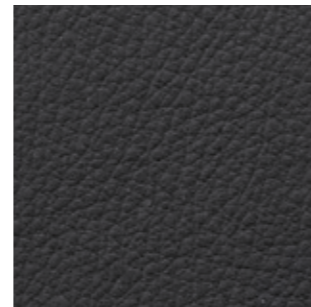
C 139



C 140



C 141



C 134



C 130



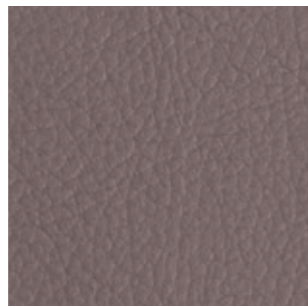
C 131



C 132



C 133



C 135



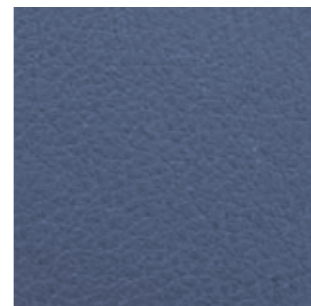
C 136



C 137



C 138



Simil Leather

Finta Pelle

Category C | H

PEDRALI®

SIMIL LEATHER / FINTA PELLE

	C 	H 
	C10÷C22	H80÷H89
COMPOSITION COMPOSIZIONE	85% PVC 15% Cotton	63% Polyurethane 29% Cotton 8% PES
ABRASION ABRASIONE	150.000 cycles Martindale (EN ISO 5470-2)	50.000 cycles Martindale (EN ISO 5470-2)
LIGHT FASTNESS SOLIDITÀ ALLA LUCE	≥6, scale 1-8 (EN ISO 105-B02)	5-6, scale 1-6 (EN ISO 105-B02)
FLAME RESISTANCE RESISTENZA AL FUOCO	B2 (DIN 4102) BS 5852 Crib 5 EN 1021.1-2 EN 13501-1 - Cs3do FAR 25853 App F Part 1 IMO RESOLUTION A.652 NF D60-013 - AM 18 NFP 92503 M1 NY/NJ - Port Authority UFAC Fabric Class 1 German fire standard B1 (except C12 and C22) US CA TB 117-2013 US CATB 133	BS 5852-1 cigarette test BS 5852-1 match test BS 5852 crib 5 EN 1021-1 EN 1021-2 IMO FTP CODE 2010 TB 117:2013 UNI 9175 classe 1 IM
APPROVED OMOLOGATO		/
CLEANING LAVAGGIO	   	      

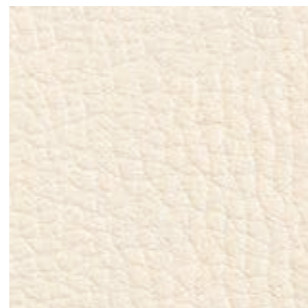


C

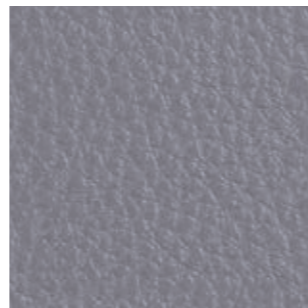
C 14



C 21



C 15



C 17



C 13



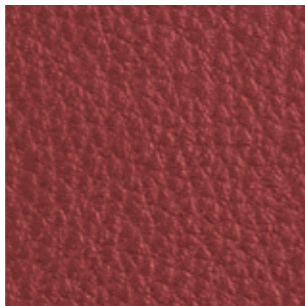
C 12



C 20



C 11



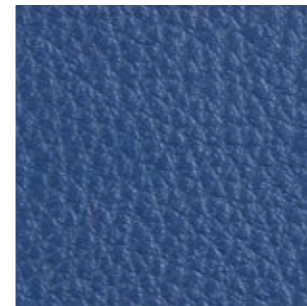
C 18



C 22



C 10



H

H 80



H 82



H 85



H 87



H 88



H 89






Simil Leather

Finta Pelle

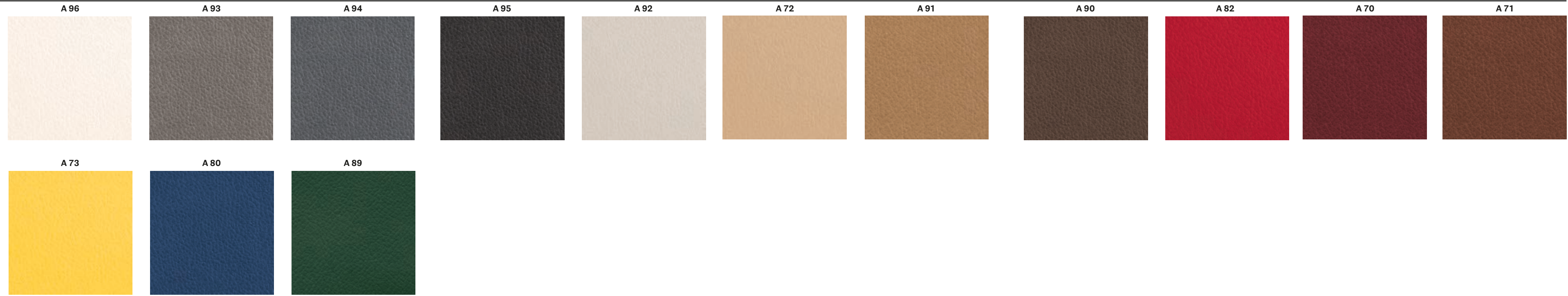
Category A | H

PEDRALI®

SIMIL LEATHER / FINTA PELLE

	A	H 
	A70÷A96	H20+H35 H100+H108
COMPOSITION COMPOSIZIONE	85% PVC 15% Polyurethane	63% Polyurethane 29% Cotton 8% PES
ABRASION ABRASIONE	50.000 cycles Martindale (EN ISO 12947-2)	150.000 cycles Martindale (EN ISO 12947-2)
RUBBING FASTNESS SOLIDITÀ ALLO SFREGAMENTO	Dry and Wet 4-5, scale 1-5 (EN ISO 105-X12)	/
LIGHT FASTNESS SOLIDITÀ ALLA LUCE	6, scale 1-8 (EN ISO 105-B02)	5-6, scale 1-8 (EN ISO 105-B02)
FLAME RESISTANCE RESISTENZA AL FUOCO	US CA TB 117-2013 - Compliant to the criteria certifying the absence of flame retardant chemicals (AB 2998)	BS 5852 Crib 5 BS 5852 Part 1-2 EN 1021 Part 1-2 IMO resolution FTP Code 2010 IMO resolution A.652 (16):1989 UNI 9175 Classe 1 IM US CA TB 117-2013 - Compliant to the criteria certifying the absence of flame retardant chemicals (AB 2998)
CLEANING LAVAGGIO		

A



H



Leather



Pelle

Category P

PEDRALI

LEATHER / PELLE

P

	PBI, PLA, PGC, PSA, PGA, PBE, PGN, PTA, PTE, PRO, PGR, PMA, PNE	PGCF, PGRF, PTEF, PMAF	PBS, PCO, PMS, PVE
COMPOSITION COMPOSIZIONE	Mid grain leather Pelle mezzo fiore	Perforated mid grain leather Pelle mezzo fiore traforata	Vintage mid grain leather Pelle mezzo fiore anticata
RUBBING FASTNESS SOLIDITÀ ALLO SFREGAMENTO	Dry (500 Cycles) and Wet (250 Cycles) ≥4 (EN ISO 11640:1998)	Dry (500 Cycles) and Wet (250 Cycles) ≥4 (EN ISO 11640:1998)	Dry (50 Cycles) and Wet (20 Cycles) ≥3 (EN ISO 11640:1998)
LIGHT FASTNESS SOLIDITÀ ALLA LUCE	≥5 (EN ISO 105 B02) (MET.5)	≥5 (EN ISO 105 B02) (MET.5)	≥2/3 (EN ISO 105-B02) (MET.5)
FLAME RESISTANCE RESISTENZA AL FUOCO	BS 5852:1979 BS EN 1021-1-2:2006 IMO RES A652(16) US CA TB 117-2013 - Compliant to the criteria certifying the absence of flame retardant chemicals (AB 2998)	BS 5852:1979 BS EN 1021-1-2:2006 IMO RES A652 (16) US CA TB 117-2013 - Compliant to the criteria certifying the absence of flame retardant chemicals (AB 2998)	BS 5852:1979 BS EN 1021-1-2:2006 US CA TB 117-2013 - Compliant to the criteria certifying the absence of flame retardant chemicals (AB 2998)
APPROVED OMOLOGATO			/
CLEANING LAVAGGIO	Clean with a damp cloth using water. Do not use detergents, solvents, bleached, abrasives. Pulire con un panno umido d'acqua. Non usare detersivi, solventi, candeggianti, abrasivi.	Clean with a damp cloth using water. Do not use detergents, solvents, bleached, abrasives. Pulire con un panno umido d'acqua. Non usare detersivi, solventi, candeggianti, abrasivi.	Clean with a damp cloth and warm water. Do not use detergents, solvents, bleached, abrasives. Pulire con acqua calda e un panno umido. Non usare detersivi, solventi, candeggianti, abrasivi.

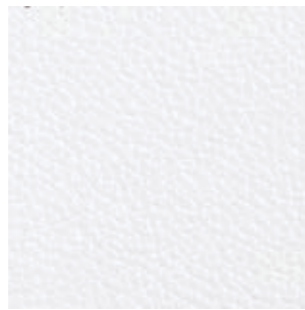
P

Collection / Collezione

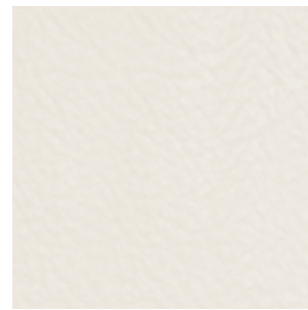


LINEA

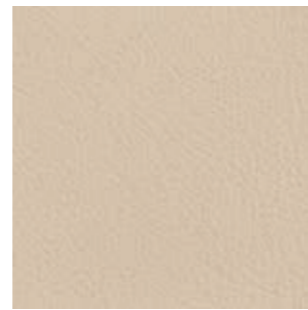
PBI



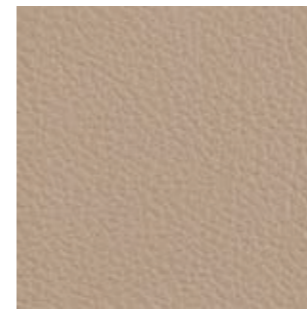
PLA



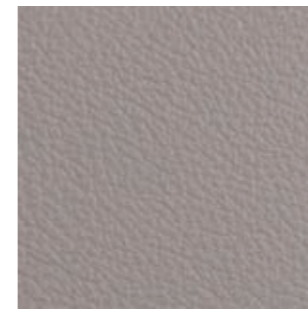
PGC



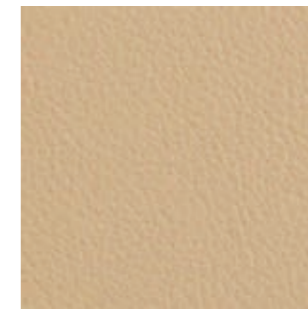
PSA



PGA



PBE



PGN



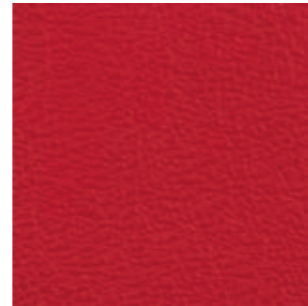
PTA



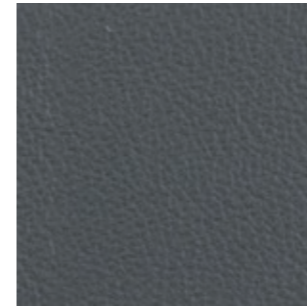
PTE



PRO



PGR



PMA



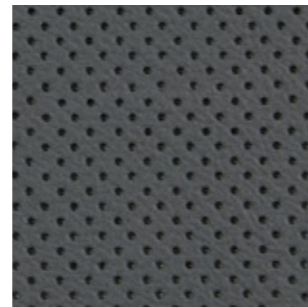
PNE



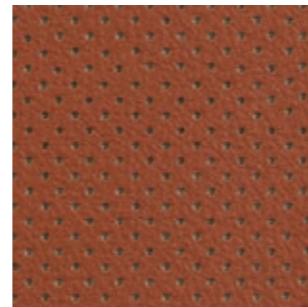
PGCF



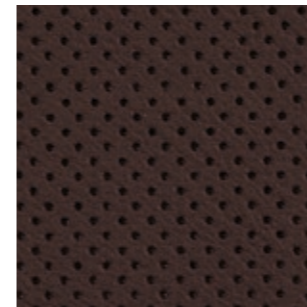
PGRF



PTEF



PMAF



only for collections / solo per collezioni



Vic and Vic Metal

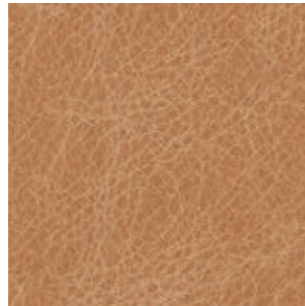
Inner part of the back,
upper part of the seat
Lato interno dello schienale
e parte superiore del sedile

Collection / Collezione

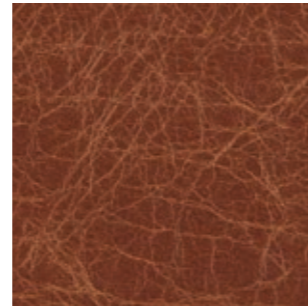


TUSCANIA

PBS



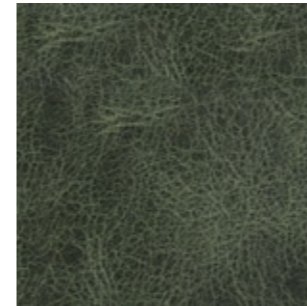
PCO



PMS



PVE



only for collections / solo per collezioni



Malmö



Inga

Hard leather

Cuoio

Category F

GENUINE AND REGENERATED
NATURALE E RIGENERATO

PEDRALI

HARD LEATHER / CUOIO

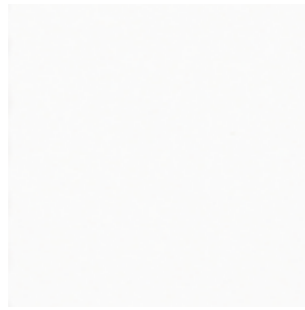
F

	F01÷F09	F11÷F19
COMPOSITION COMPOSIZIONE	Genuine hard leather, tanned with vegetable substances Cuoio naturale, conciato con sostanze vegetali	Regenerated hard leather. Tanned leather cuttings and shavings linked with natural rubber latex Cuoio rigenerato. Ritagli e rasatura di cuoio conciato legati con lattice di gomma naturale
RUBBING FASTNESS SOLIDITÀ ALLO SFREGAMENTO	Satisfactory up to maximum 700 abrasions in humid environment and 1000 abrasions in dry environment Soddisfacente sino a max 700 abrasioni all'umido e 1000 abrasioni al secco	Dry and Wet >1000 (EN ISO 11640)
LIGHT FASTNESS SOLIDITÀ ALLA LUCE	/	4-5 Xenotest Method
FLAME RESISTANCE RESISTENZA AL FUOCO	US CA TB 117-2013 - Compliant to the criteria certifying the absence of flame retardant chemicals (AB 2998)	BS EN 1021 1&2 BS 5852 Part 1 US CA TB 117 E Part 1
CLEANING LAVAGGIO	Clean with a damp cloth using water Pulire con un panno umido d'acqua	Clean with a damp cloth using water Pulire con un panno umido d'acqua

F

GENUINE HARD LEATHER
CUOIO NATURALE

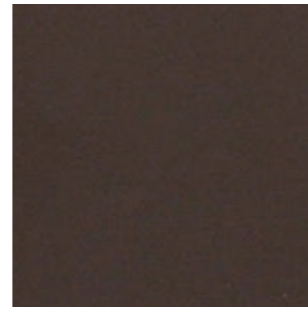
F 07



F 05



F 01



F 06



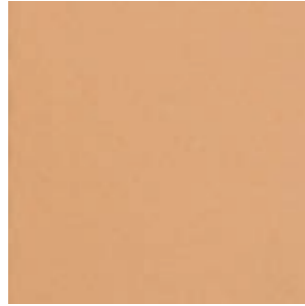
F 09



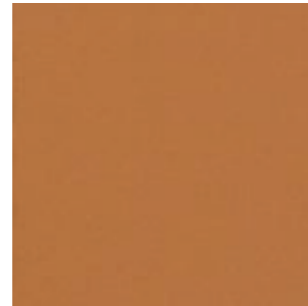
F 08



F 03



F 04



only for collections / solo per collezioni



Fox



Gliss



Inga



Kuadra



Kuadra XL



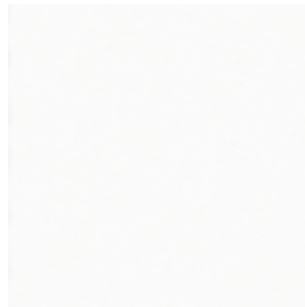
Malmö



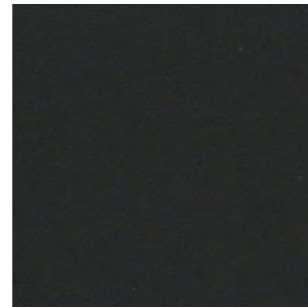
Mood

REGENERATED HARD LEATHER
CUOIO RIGENERATO

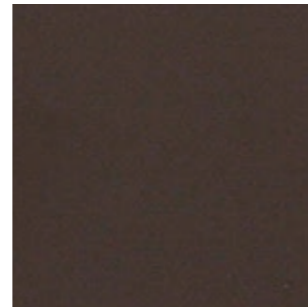
F 18



F 11



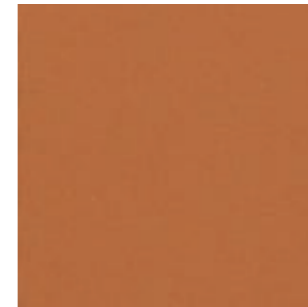
F 12



F 19



F 13



F 17



only for collections / solo per collezioni



Inga



Kuadra



Kuadra XL

Velvet

Velluto

Category E | G | H | N

PEDRALI

VELVET / VELLUTO

	E	G 	G180+G185
COMPOSITION COMPOSIZIONE	100% Cotton	100% Cotton	100% TREVIRA CS®
ABRASION ABRASIONE	50.000 cycles Martindale (ISO 12947-2)	70.000 cycles Martindale (ISO 12947-2)	50.000 cycles Martindale (EN ISO 12947)
RUBBING FASTNESS SOLIDITÀ ALLO SFREGAMENTO	Dry 4-5 and Wet 3-5, scale 1-5 (ISO 105-X12)	Dry and Wet 4-5, scale 1-5 (ISO 105-X12)	Dry and Wet 4-5, scale 1-5 (EN ISO 105-X12)
PILLING	/	5, scale 1-5 (ISO 12945-2)	4-5, scale 1-5 (EN ISO 12945)
LIGHT FASTNESS SOLIDITÀ ALLA LUCE	4-6, scale 1-8 (ISO 105-B02)	4-5, scale 1-8 (ISO 105-B02)	5-7, scale 1-8 (ISO 105-B02:2014)
SOUND ABSORPTION ASSORBIMENTO ACUSTICO	/	folded: $\alpha_w = 0.75$ (EN ISO 354)	folded: $\alpha_w = 0.85$ Class B (ISO 11654)
FLAME RESISTANCE RESISTENZA AL FUOCO	/	US CA TB 117-2013 - Compliant to the criteria certifying the absence of flame retardant chemicals (AB 2898)	ASTM E84 class A BS 5852 Crib 5 BS 5852 Part 1 BS 5867 Part 2 type B DIN 4102 B1 EN 1021-1/2 EN 13501-1, B-S1, d0 IMO FTP Code 2010:Part 8 NF D60-013 NF P92 507 M1 NFPA 701 ÖNORM B1/Q1 SN 198 898 5.2 UNI 9175 Classe 1 IM UNI 9177 Classe 1 US CA TB 117-2013
APPROVED OMOLOGATO	/	/	 PRODUCT CERTIFIED FOR LOW CHEMICAL EMISSIONS UL COM-001 UL 2818 170166-420
CLEANING LAVAGGIO			

VELVET / VELLUTO

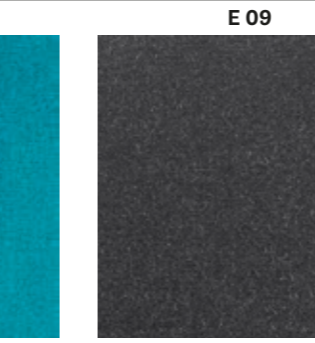
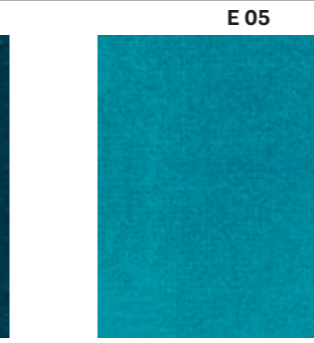
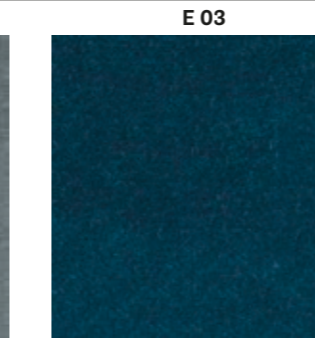
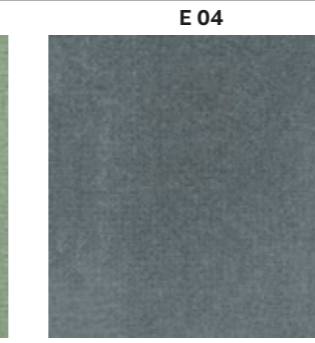
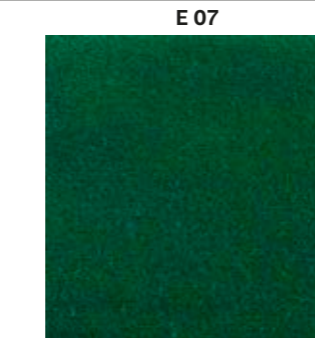
	H 	N 
COMPOSITION COMPOSIZIONE	100% TREVIRA CS®	100% Polyester FR
ABRASION ABRASIONE	190.000 cycles Martindale (EN ISO 12947-2)	100.000 cycles Martindale (EN ISO 12947)
RUBBING FASTNESS SOLIDITÀ ALLO SFREGAMENTO	Dry and Wet 4-5, scale 1-5 (EN ISO 105-X12)	Dry 5 and Wet 4-5, scale 1-5 (EN ISO 105-X12)
PILLING	5, scale 1-5 (EN ISO 12945-2)	4, scale 1-5 (EN ISO 12945-2)
LIGHT FASTNESS SOLIDITÀ ALLA LUCE	5, scale 1-8 (EN ISO 105-B02)	4-6, scale 1-8 (EN ISO 105-B02)
SOUND ABSORPTION ASSORBIMENTO ACUSTICO	folded: $\alpha_w = 0.70$ (EN ISO 354:2003)	folded: $\alpha_w = 0.80$ Class B (ISO 11654)
FLAME RESISTANCE RESISTENZA AL FUOCO	BS 5852 Part 0,1 DIN 4102 B1 EN 1021-1&2 IMO MSC 307(88) Annex 1 Part 7-8 NF P 92-503-507 M1 NFPA 260:2019 UNI 9177 Classe 1 UNI 9175 Classe 1 IM US CA TB 117-2013	BS 5852 Crib 5 BS 5867 part 2 type B DIN 4102 B1 EN 1021-1/2 IMO FTP Code 2010 Part 8 NFPA 701 ÖNORM B1/Q1 SN 198 898 5.2 UNI 9175 Classe 1 IM US CA TB 117-2013
APPROVED OMOLOGATO	/	 PRODUCT CERTIFIED FOR LOW CHEMICAL EMISSIONS UL COM-001 UL 2818 170166-420
CLEANING LAVAGGIO		

E

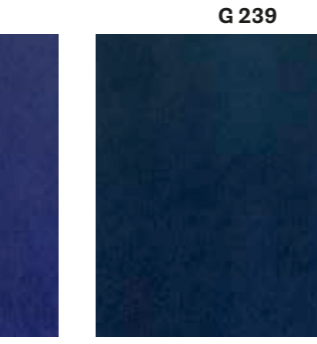
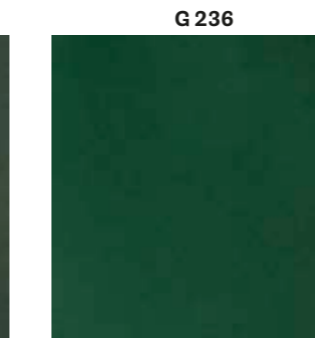
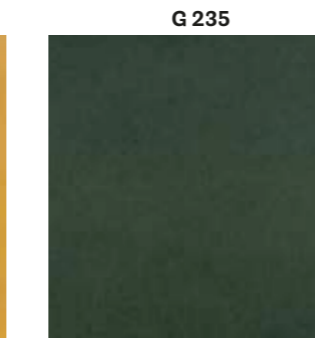
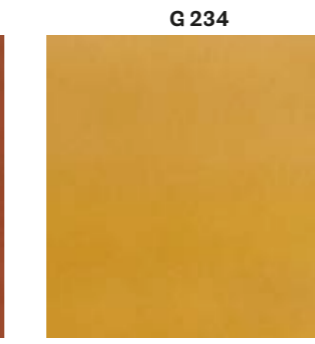
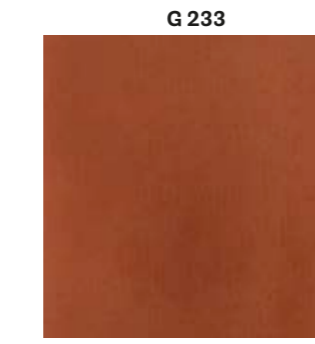
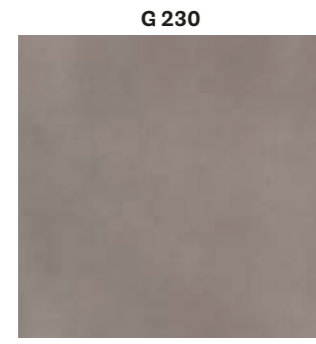
Collection / Collezione

• **DEDAR**

ADAMO & EVA
from E01 to E09



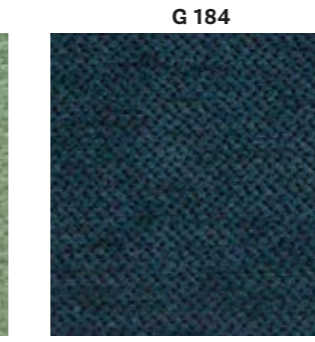
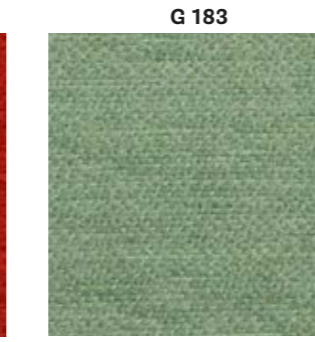
G



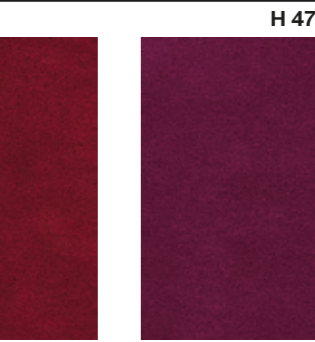
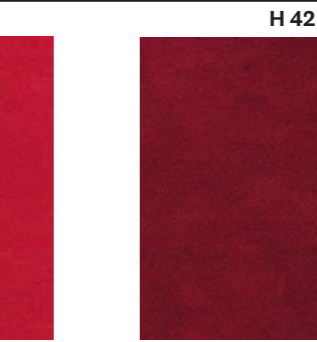
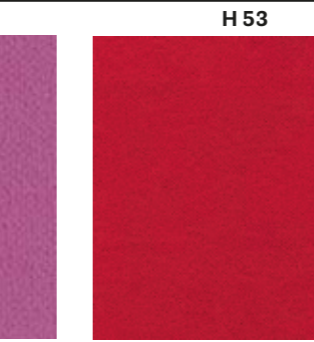
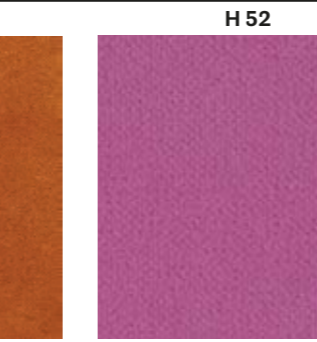
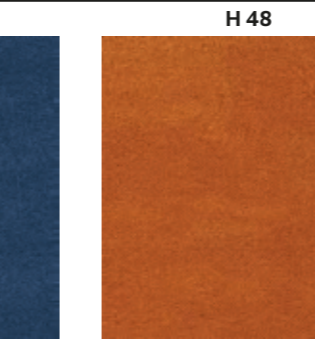
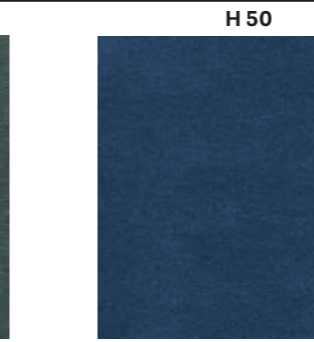
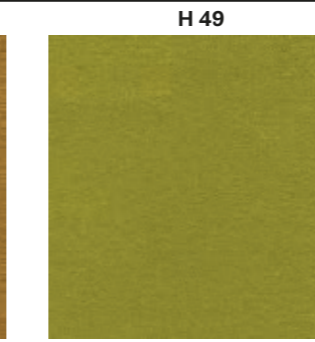
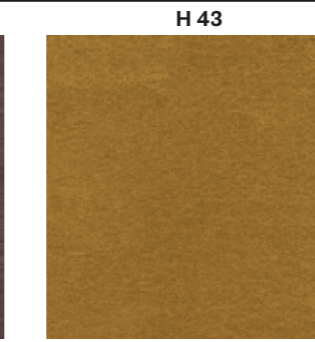
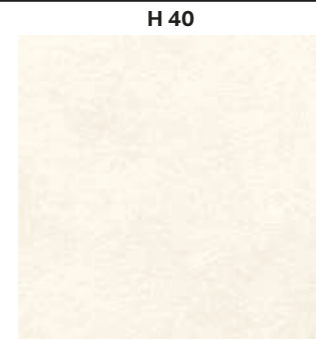
Collection / Collezione

• **kvadrat**

STILL
from G180 to G185
DESIGNER Georgina Wright



H



N

Collection / Collezione

• **kvadrat-SAHCC**

BALBOA
from N20 to N27
DESIGNER Najberg

